

Equatorial Guinea 2014 Licensing Round

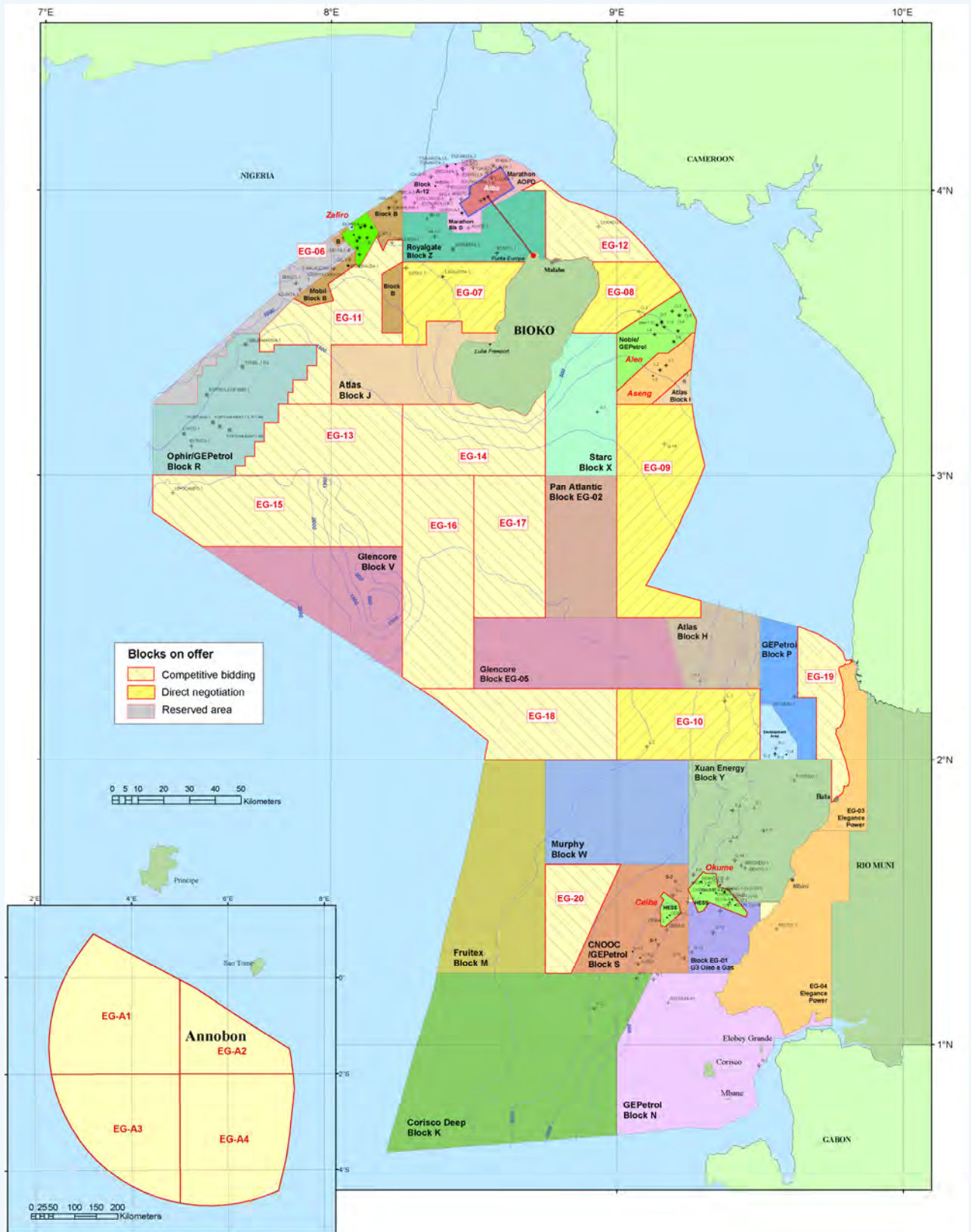


Ministry of Mines, Industry and Energy
EQUATORIAL GUINEA



Equatorial Guinea 2014 Licensing Round

Blocks on offer



Equatorial Guinea 2014 Licensing Round

**London Data Room
Open until 30 September, 2014.**

Key Dates:

Data Room Opens.....1 July, 2014

Closing Date for Direct Negotiation-companies.....31 August, 2014

License Round Closes.....30 September, 2014



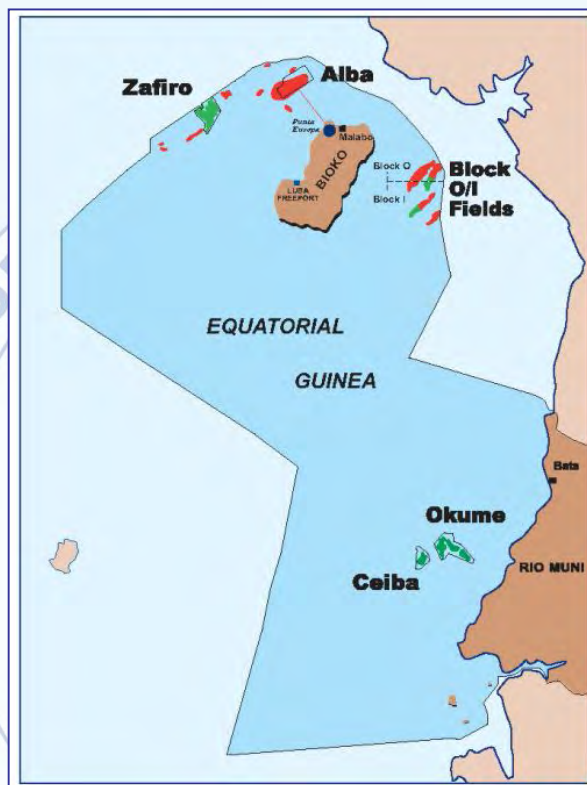
Further details available from the website.
www.equatorialoil.com

Please contact Mike Larsen for further details.
Email: larsenm@rpsgroup.com
Tel: +44(0)1491 415400

Equatorial Guinea 2014 Licensing Round

Geological Overview

Equatorial Guinea is situated in the hub of the dynamic offshore West Africa Petroleum Province and is now established as a significant petroleum producing nation. Vigorous exploration during the 1990's combined with rapid field development has resulted in daily production rising from less than 5,000 bopd in 1992 to a 2014 average of 436,000 boepd.

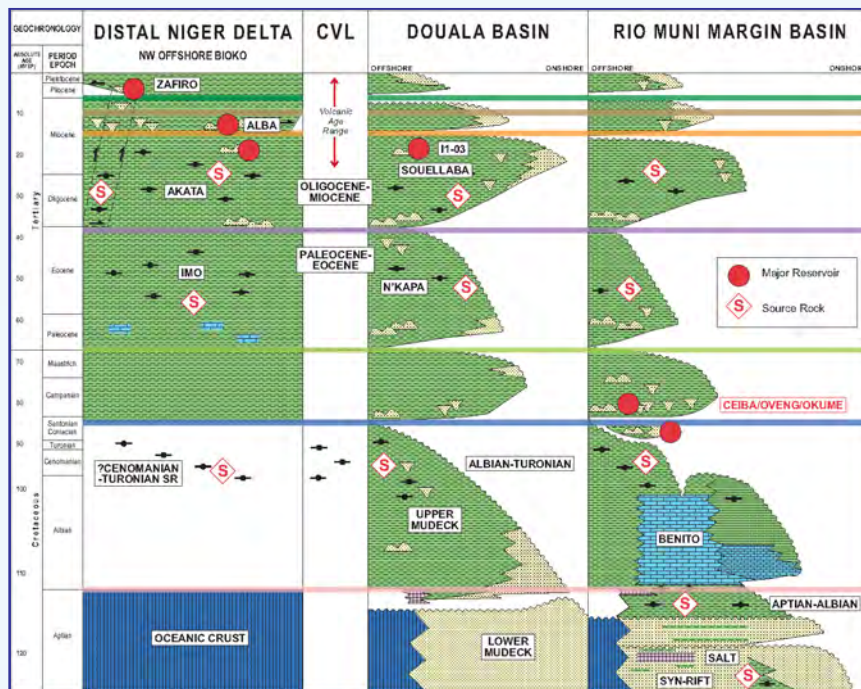


Fields developed in the period 1996 – 2011 included the 1.1 billion barrel ExxonMobil operated Zafiro Field, offshore Bioko Island which came onstream in 1996, and the Hess operated Ceiba Field, which defined a new petroleum system in Equatorial Guinea's Rio Muni Basin, discovered in 1999 and brought onstream in November 2000.

The Hess Operated Okume Complex, also in the Rio Muni Basin, commenced production in 2008 and the Noble operated Aseng Field, located on the Equatorial Guinea part of the Douala Basin, offshore Bioko Island, discovered in 2006 and which produced first oil on November 6th, 2011.

Equatorial Guinea 2014 Licensing Round

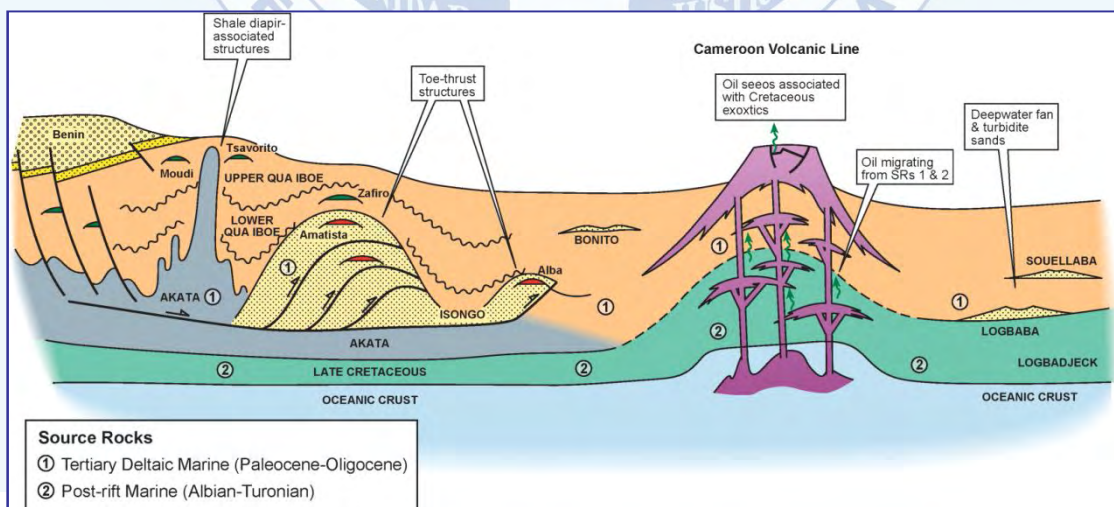
Geological Overview



Regional Stratigraphy of Equatorial Guinea.

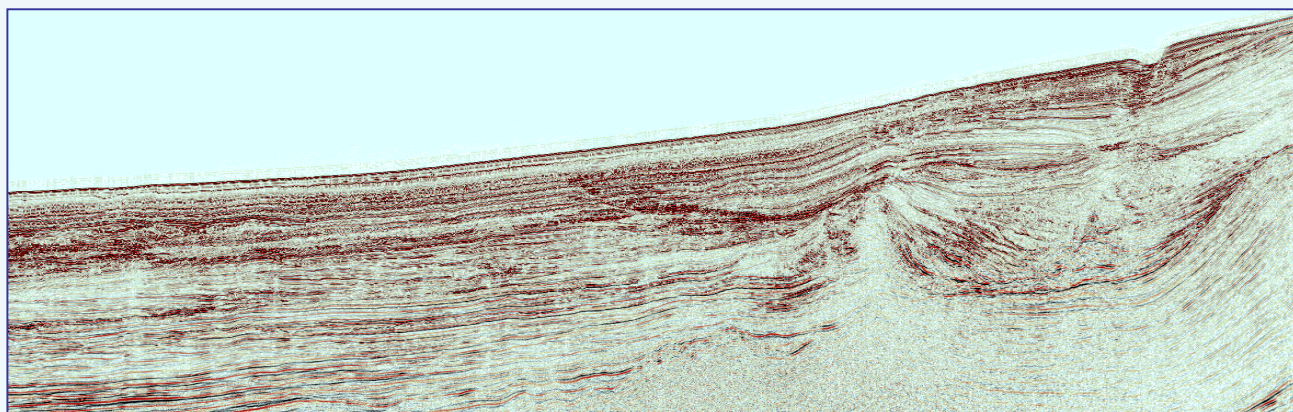
Equatorial Guinea overlies two world class petroliferous sedimentary basins; highly prospective with proven petroleum systems.

- North of Bioko Island lies distal part of Niger Delta – Rio del Ray Basin.
- East of Bioko Island lies the Rio Muni Basin.
- Southern region of Equatorial lies the Douala Basin.



Schematic Diagram of Regional Geology.

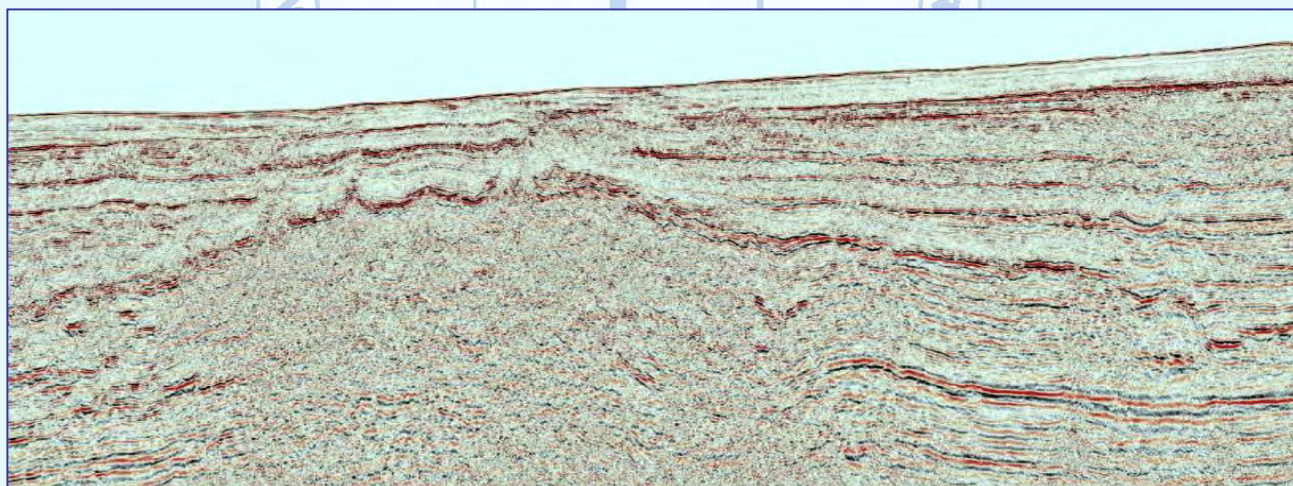
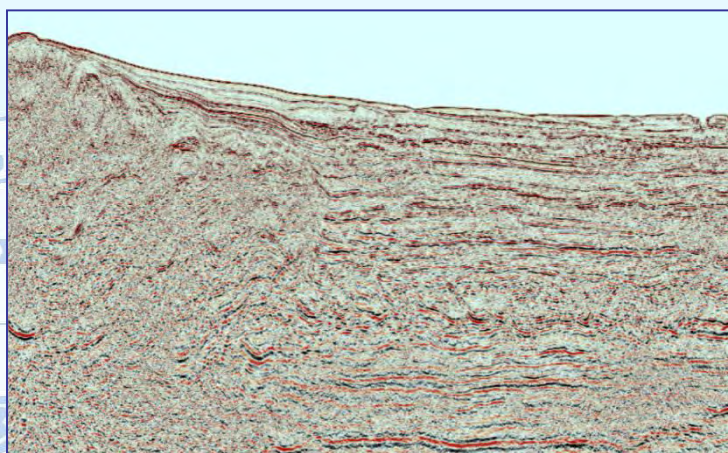
Equatorial Guinea 2014 Licensing Round



Data Room

Situated in London, UK.
Officially open on 1 July,
2014.

All available data such as
seismic and well data can
be seen in the Data Room.



Please contact Mike Larsen for further details.
Email: larsenm@rpsgroup.com
Tel: +44(0)1491 415400

Equatorial Guinea 2014 Licensing Round



Ministry of Mines, Industry and Energy
www.equatorialoil.com