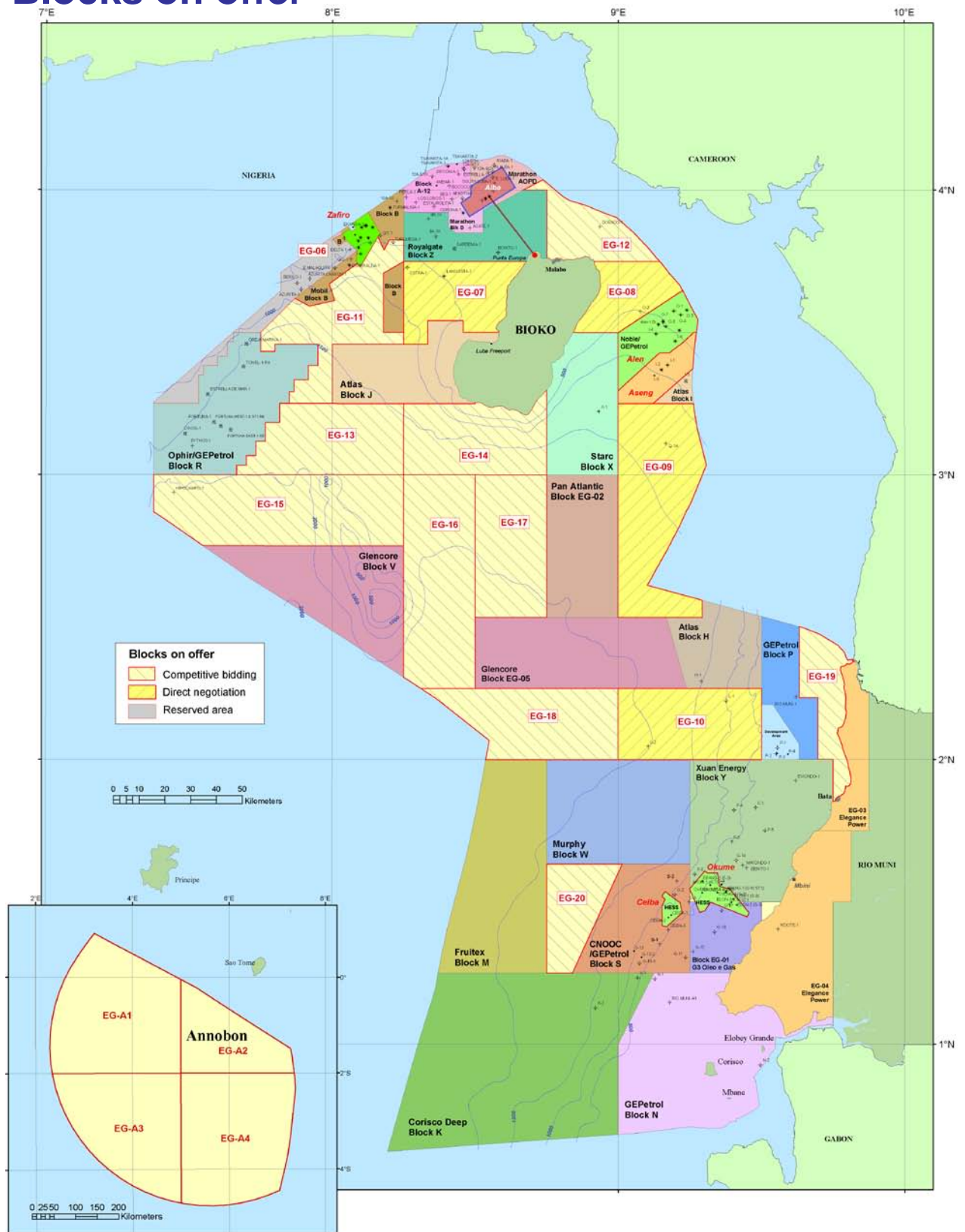


Equatorial Guinea 2014 Licensing Round



Equatorial Guinea 2014 Licensing Round

Blocks on offer



Equatorial Guinea 2014 Licensing Round

London Data Room Open until 30 November, 2014.

Key Dates:

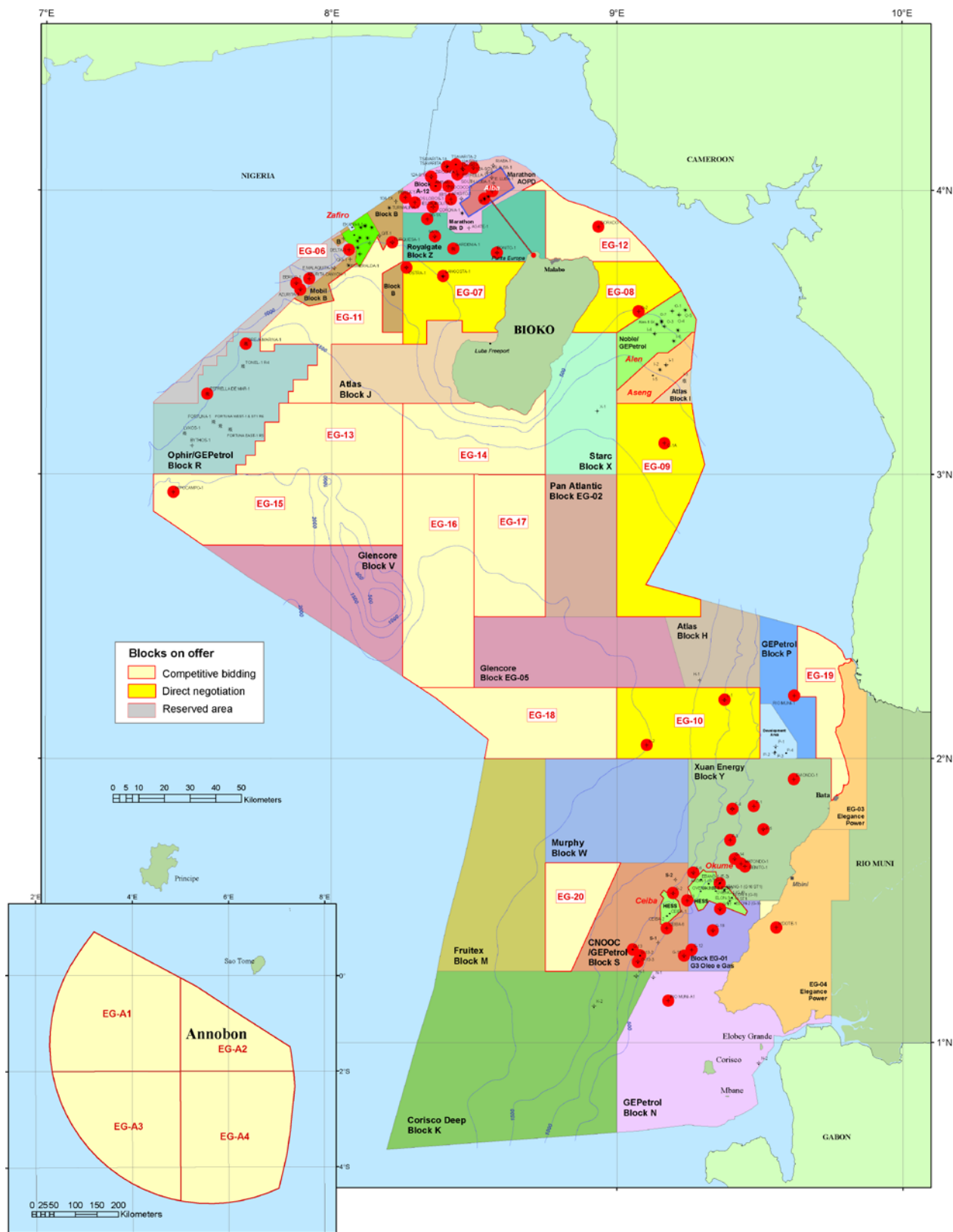
Data Room Opens.....	1 July, 2014
Closing Date for Direct Negotiation-companies.....	30 September, 2014
License Round Closes.....	30 November, 2014

Further details available from the website.
www.equatorialoil.com

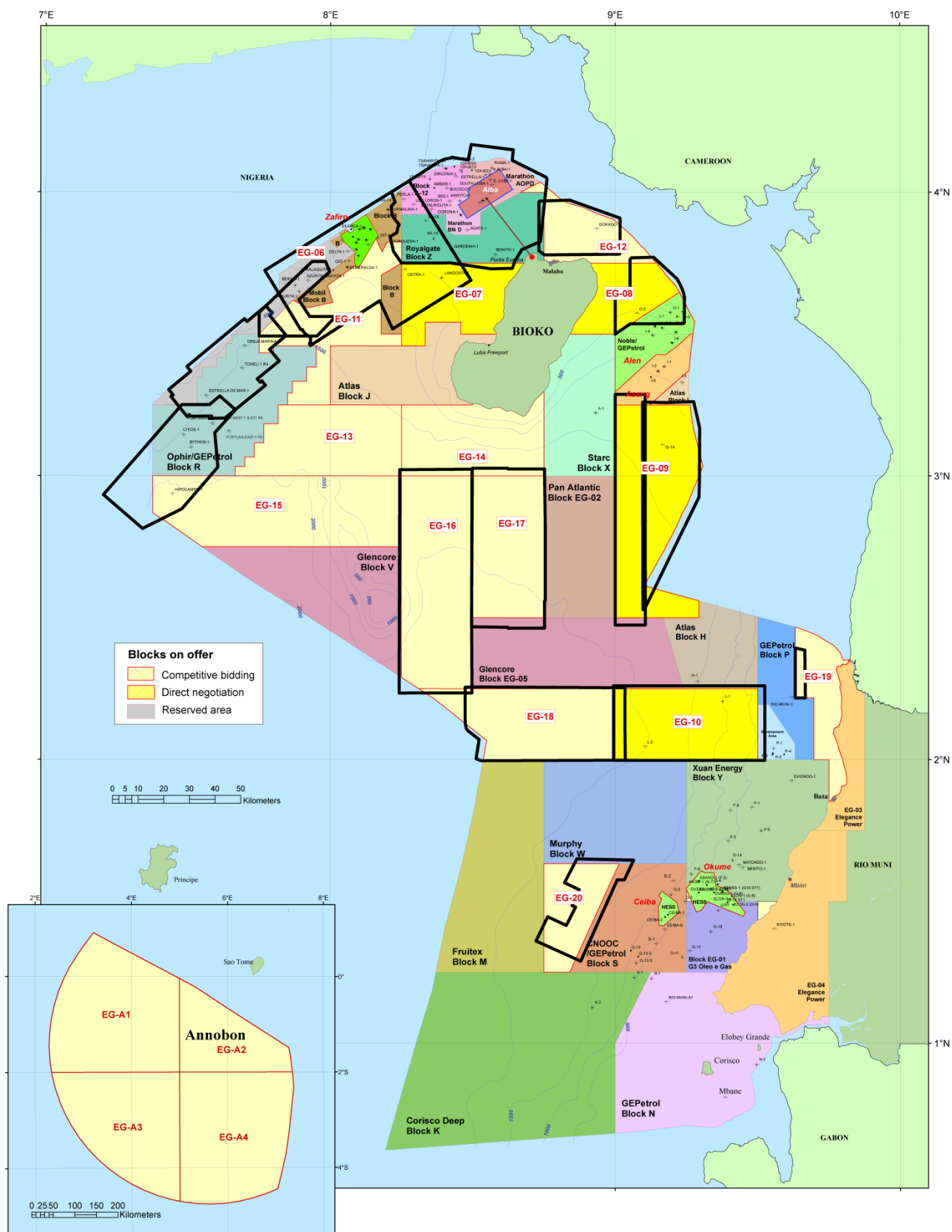
Please contact Carlos Gomez to book the Data Room
and for further details.
Email: gomezc@rpsgroup.com
Tel: +44(0)1491 415400



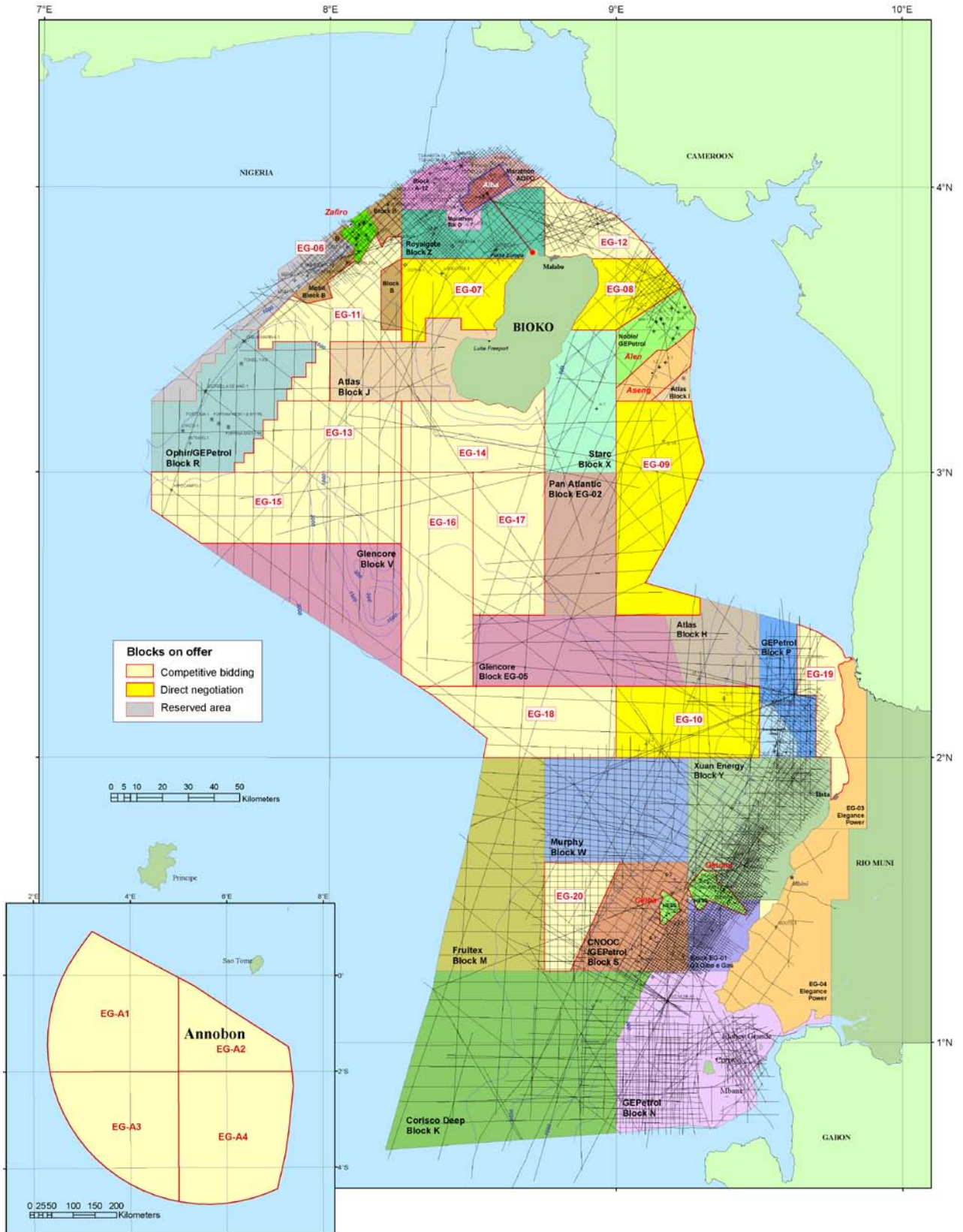
Available well database



Available 3D seismic database



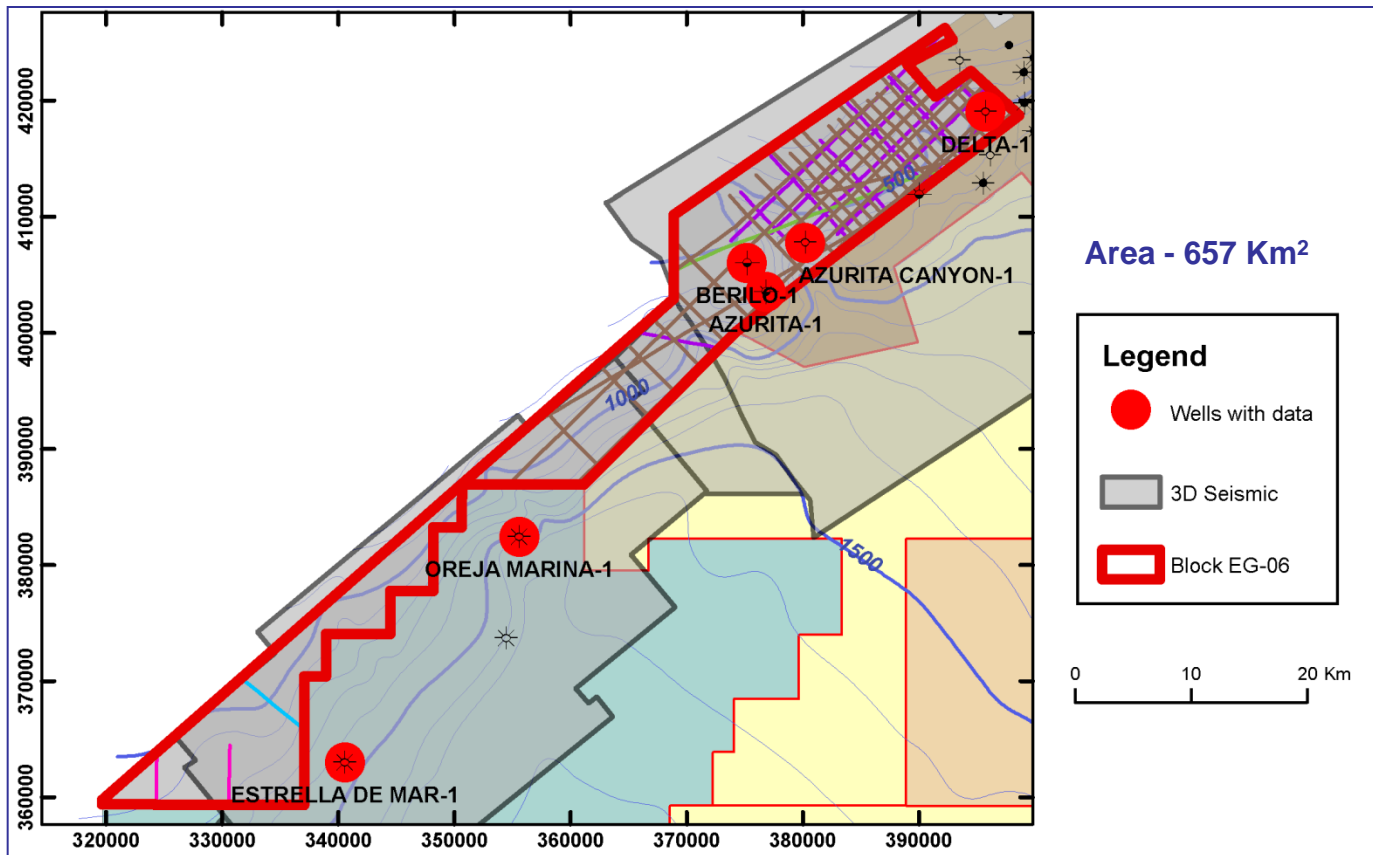
Available 2D seismic database



Ministry of Mines, Industry and Energy
EQUATORIAL GUINEA



Reserved - BLOCK EG-06



Current Data

3D Seismic Surveys:

Block B & C	323 Km²
Block C Final Migration	257 Km²
Block T – Gazprom	213 Km²

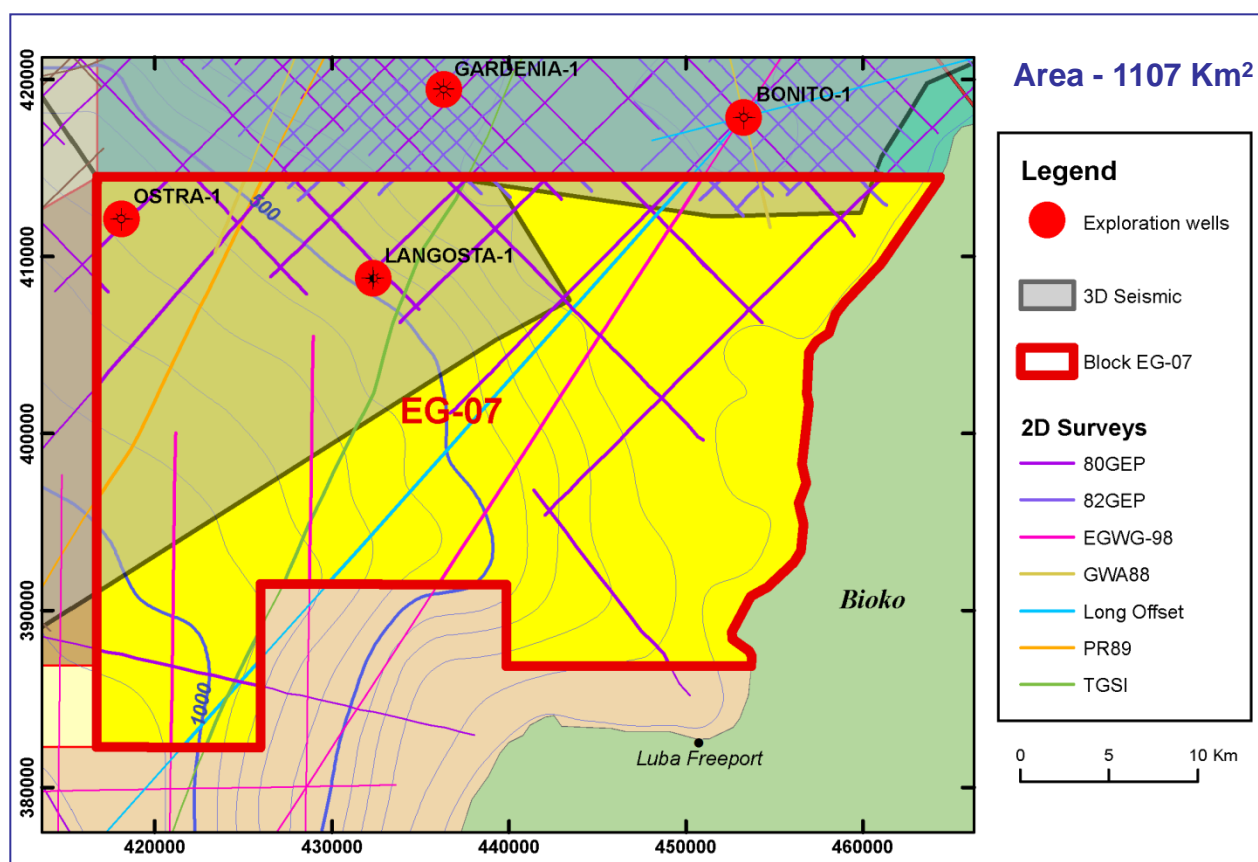
2D Seismic Surveys:

EG-AB	466 Km
80GEP	158 Km
TGSI	26 Km
EGWG-98	10 Km
Long Offset	7 Km

Well Data:

Azurita-1
Azurita Canyon-1
Berilo-1
Delta-1

Direct Negotiation - BLOCK EG-07



Current Data

3D Seismic Surveys:

Block D Alba 35 Km²

Block B & C 386 Km²

Well Data:

Ostra-1

Langosta-1

2D Seismic Surveys:

80GEP 178 Km

EGWG-98 59 Km

Long Offset 37 Km

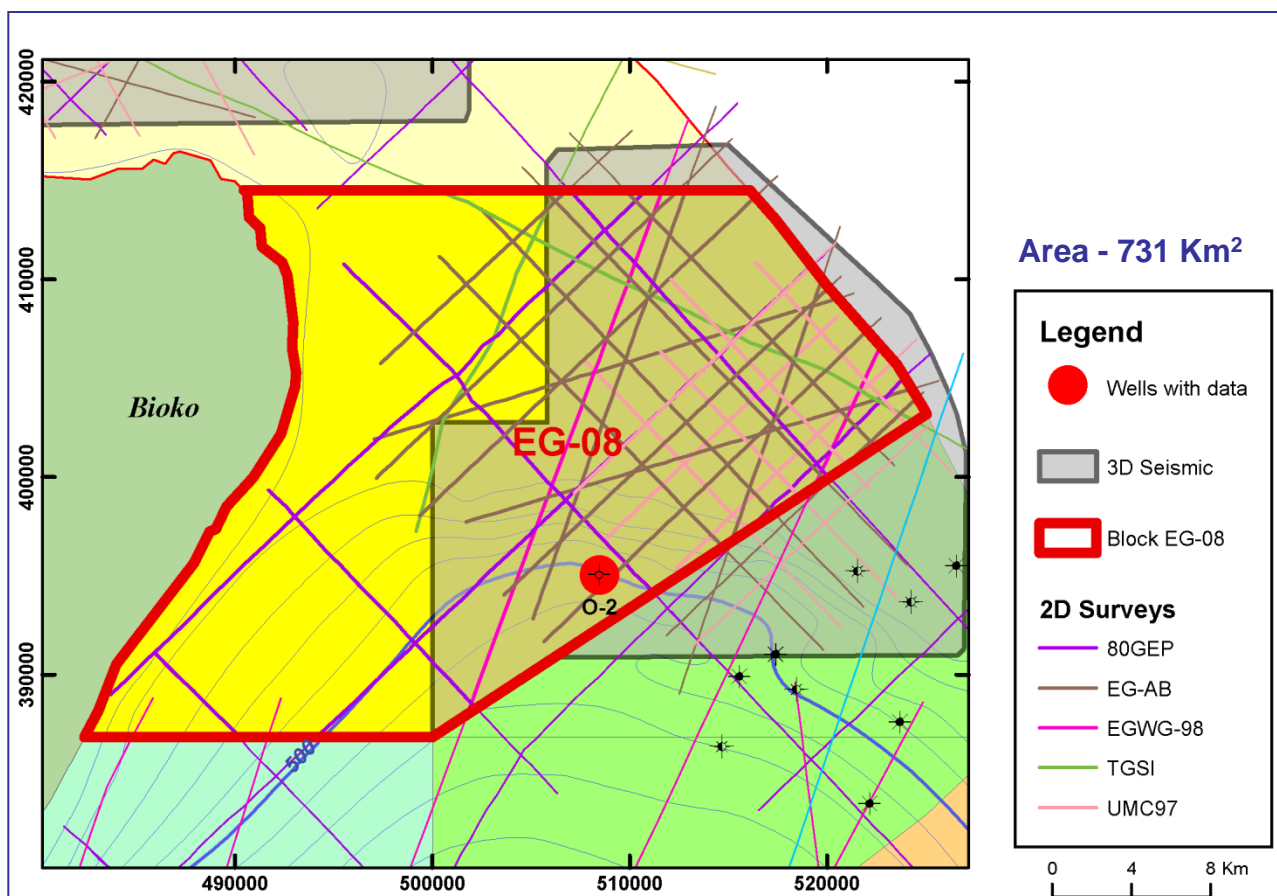
TGSi 32 Km

82GEP 23 Km

PR89 20 Km

GWA88 8 Km

Direct Negotiation - BLOCK EG-08



Current Data

3D Seismic Surveys:

Block C-15, O 475 Km²

Well Data:

O-2

2D Seismic Survey:

EGW-98 583 Km

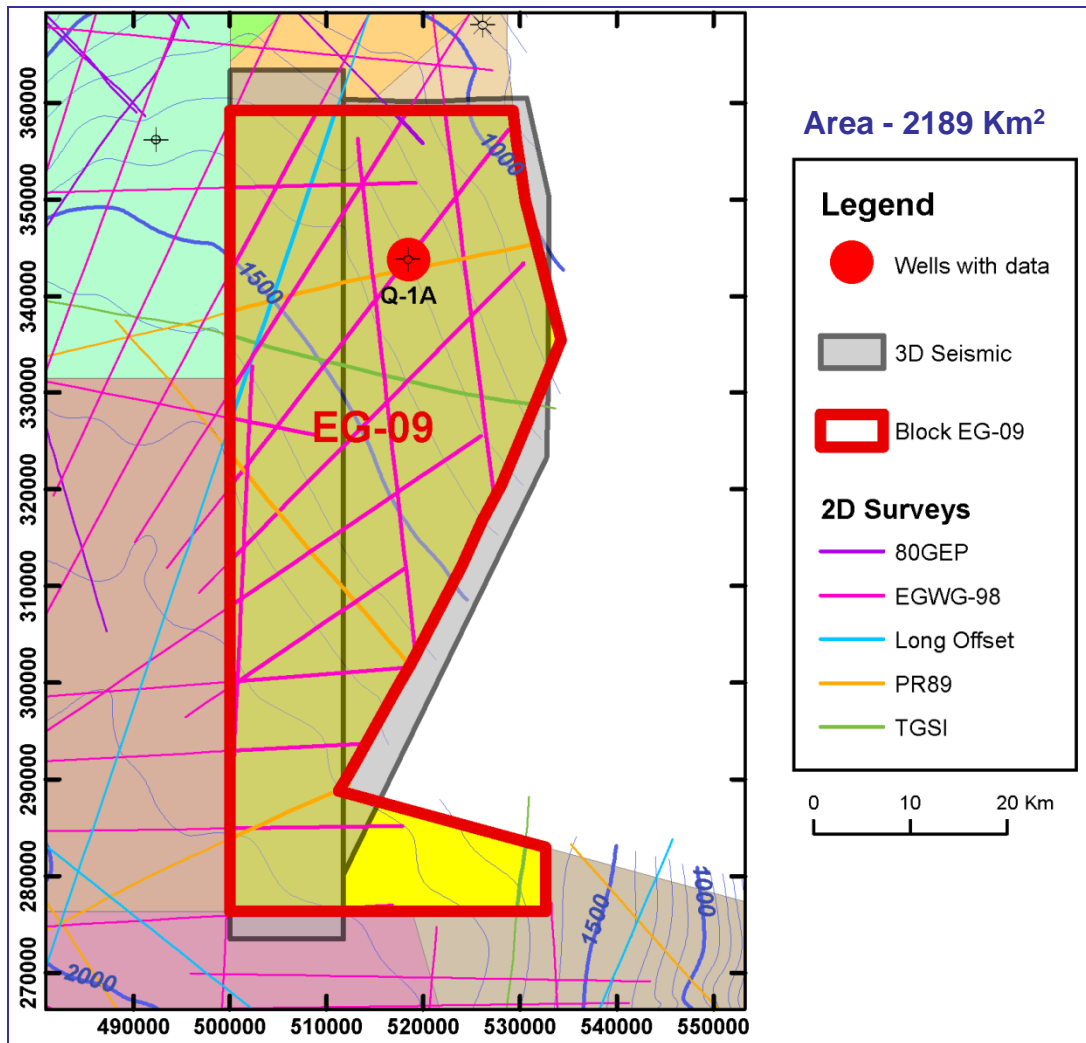
EG-A 273 Km

80GEP 146 Km

UMC97 94 Km

TGSi 45 Km

Direct Negotiation - BLOCK EG-09



Current Data

3D Seismic Surveys:

Block Q	1108 Km ²
Block Q ext	971 Km ²

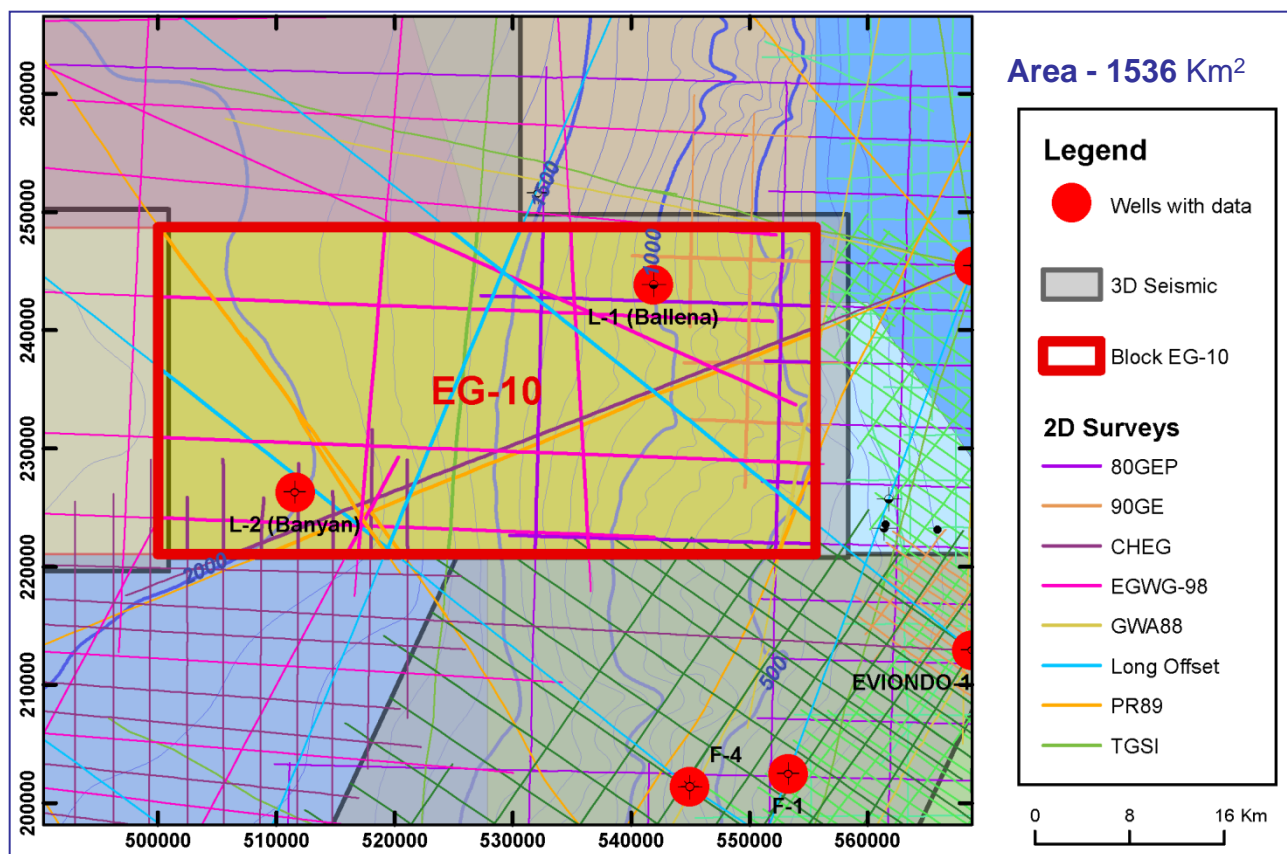
Well Data:

Q-1A

2D Seismic Survey:

EGWG-98	429 Km
PR89	73 Km
TGSi	40 Km
Long Offset	34 Km
80GEP	5 Km

Direct Negotiation - BLOCK EG-10



Current Data

3D Seismic Surveys:

Block L 1536 Km²

Well Data:

L-1

L-2

2D Seismic Surveys:

EGWG-98 257 Km

80GEP 118 Km

PR89 115 Km

CHEG 101 km

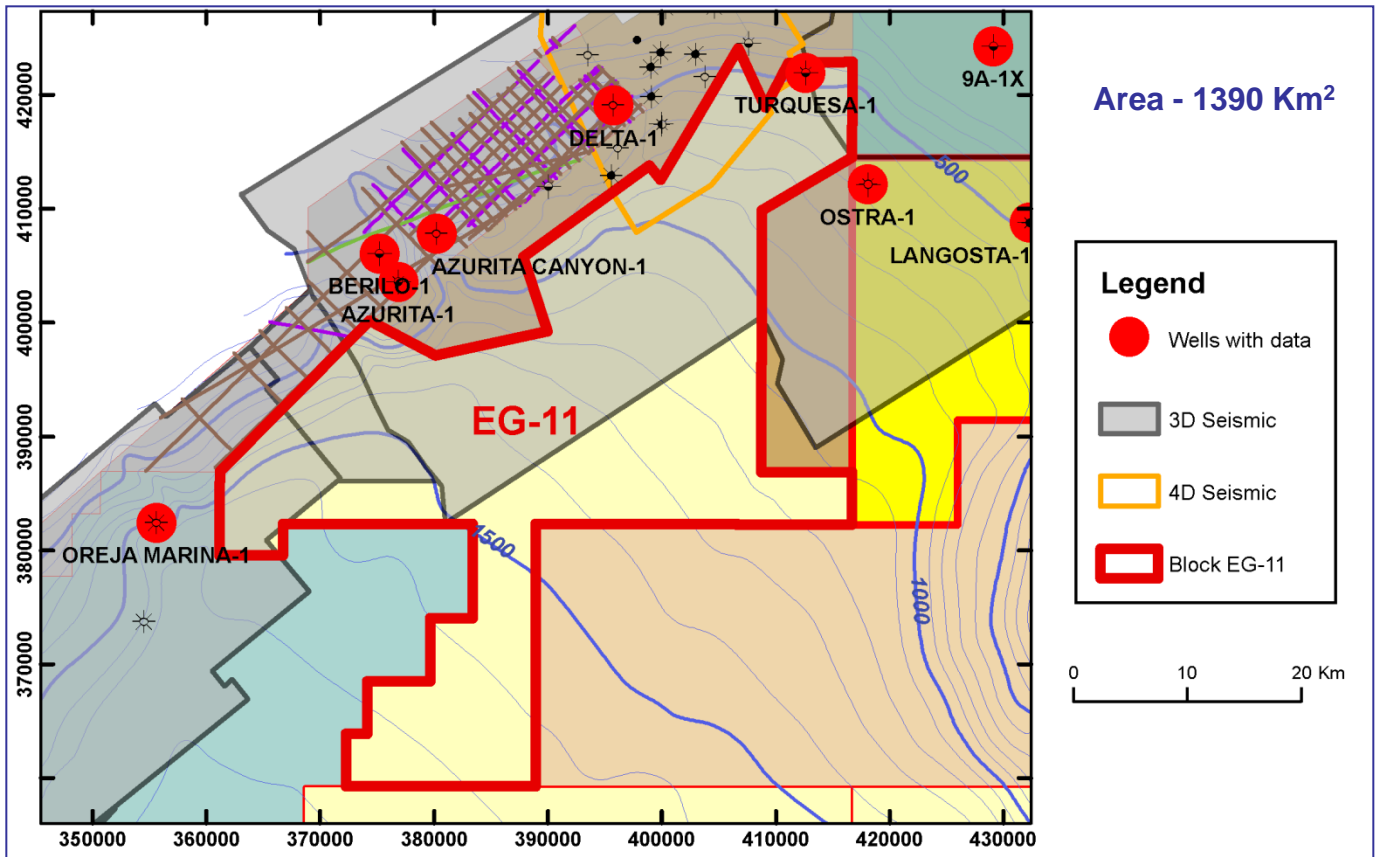
Long Offset 95 Km

90GE 67 Km

GWA88 16 Km

TGSI 27 Km

Competitive Bidding - BLOCK EG-11



Current Data

3D Seismic Surveys:

Block B & C	655 Km ²
Block T	223 Km ²
Block C	80 Km ²

2D Seismic Survey:

EG-B	279 Km
80GEP	164 Km
EGWG-98	127 Km
Long Offset	64 Km
PR89	21.5 Km
TGSI	10 Km

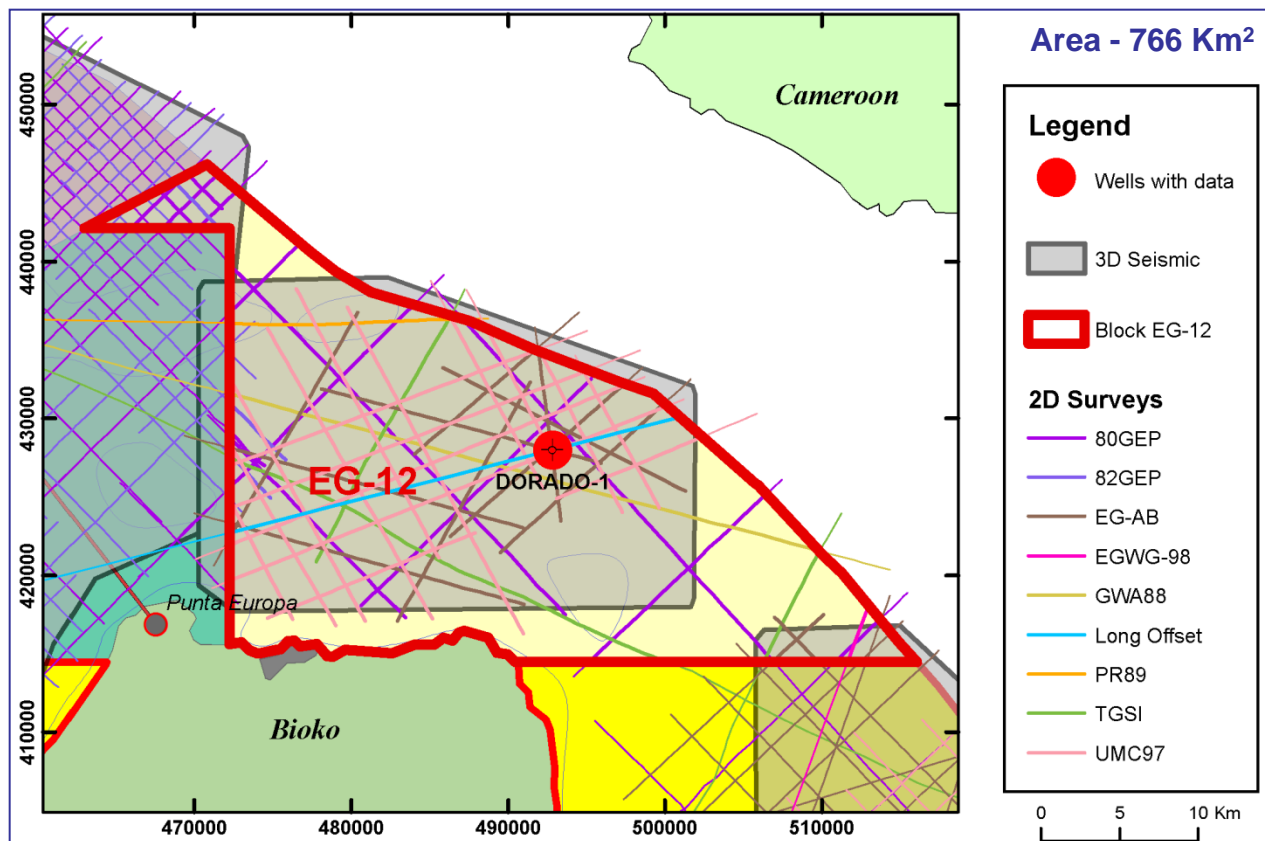
Well Data:

Turquesa-1

4D Seismic:

Zafiro 2007 76 Km²

Competitive Bidding - BLOCK EG-12



Current Data

3D Seismic Surveys:

Block B-14	529 Km ²
Block D Alba	25 Km ²
Block C-15	20 Km ²

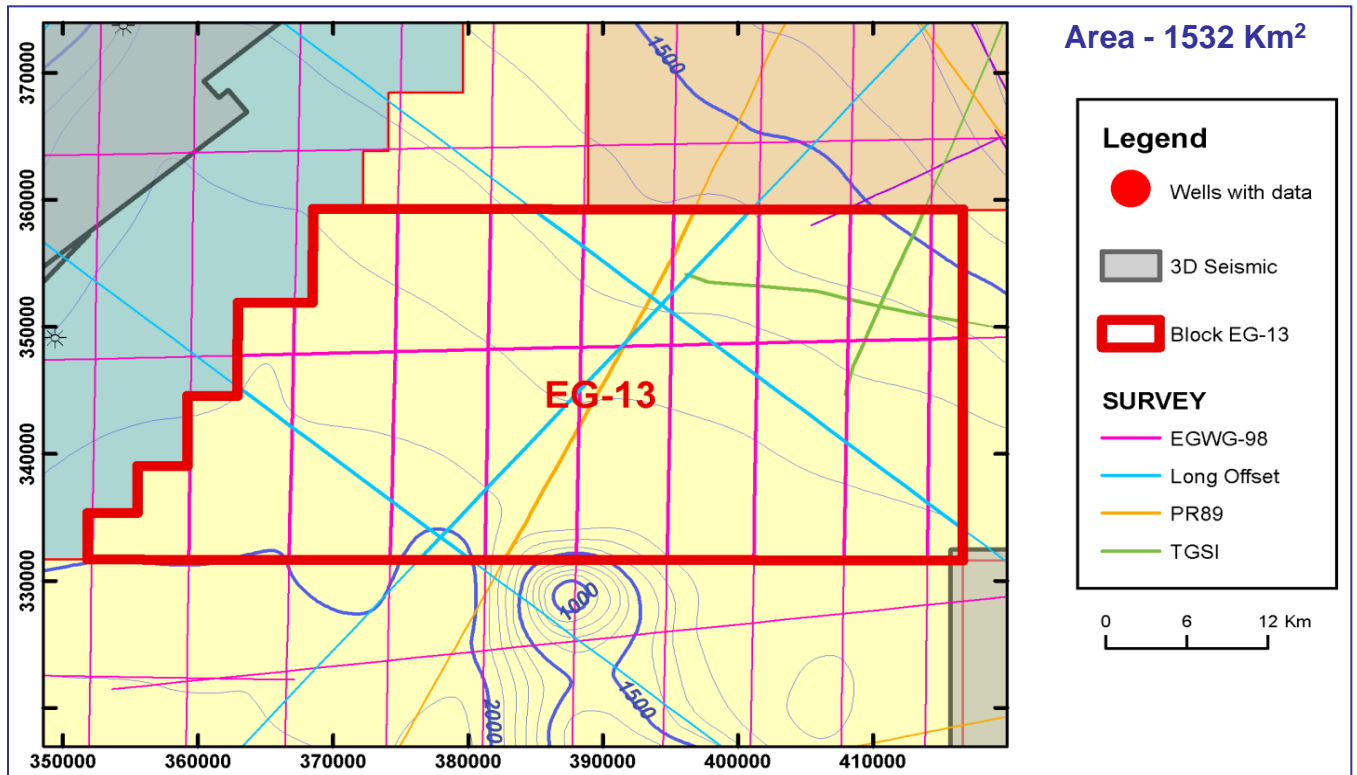
Well Data:

Dorado-1

2D Seismic Surveys:

UMC97	275 Km
80GEP	170 Km
EG-AB	167 Km
TGSI	57 Km
GWA88	39 Km
Long Offset	30 Km
PR89	15 Km
82GEP	13 Km
EGWG-98	4 Km

Competitive Bidding - BLOCK EG-13



Current Data

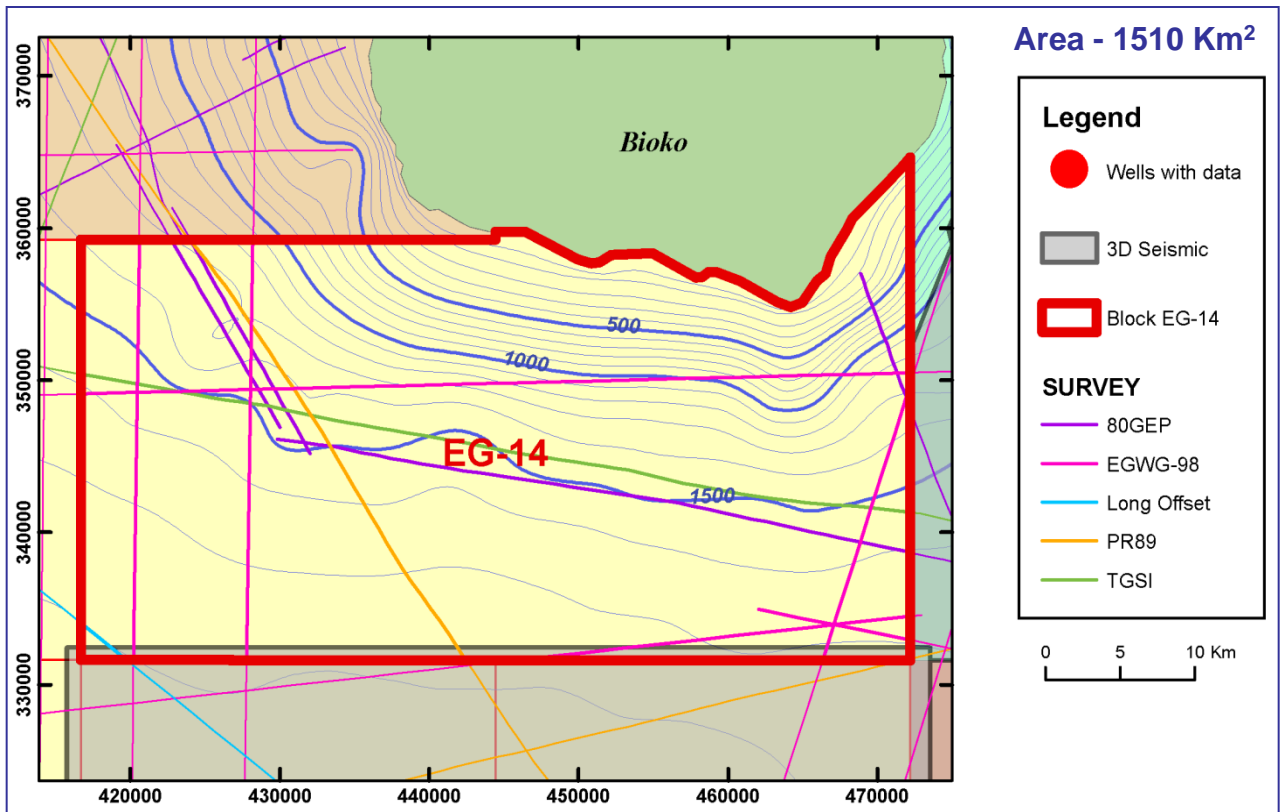
No 3D Seismic Surveys

No Well Data

2D Seismic Surveys:

EGWG-98	284 Km
Long Offset	100 Km
TGSi	37 Km
PR89	31Km

Competitive Bidding - BLOCK EG-14



Current Data

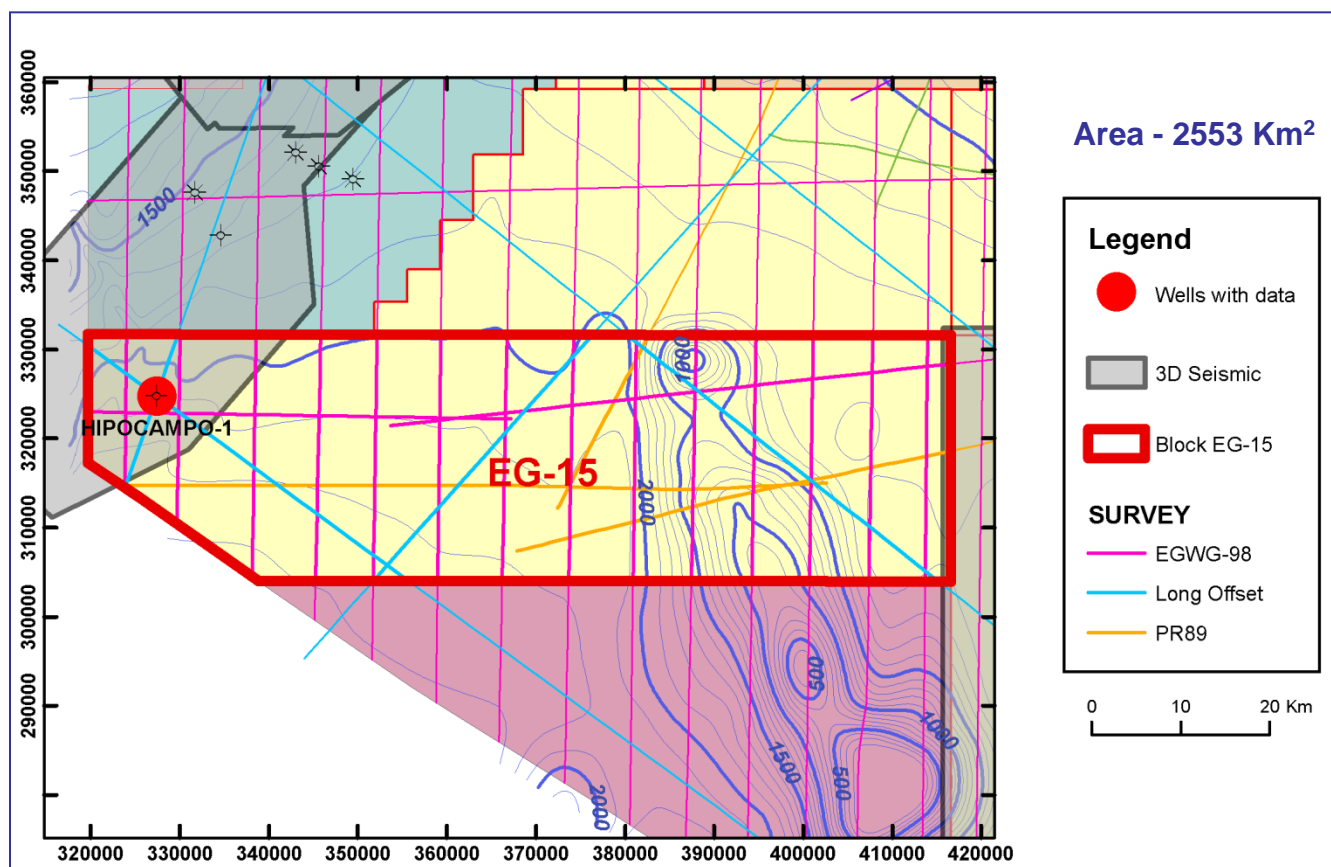
No 3D Seismic Surveys

No Well Data

2D Seismic Surveys:

EGWG-98	167 Km
80GEP	83 Km
TGSi	56 Km
PR89	33 Km
Long Offset	4 Km

Competitive Bidding - BLOCK EG-15



Current Data

3D Seismic Surveys:

Ex Block E 243 Km²

2D Seismic Surveys:

EGWG-98 480 Km

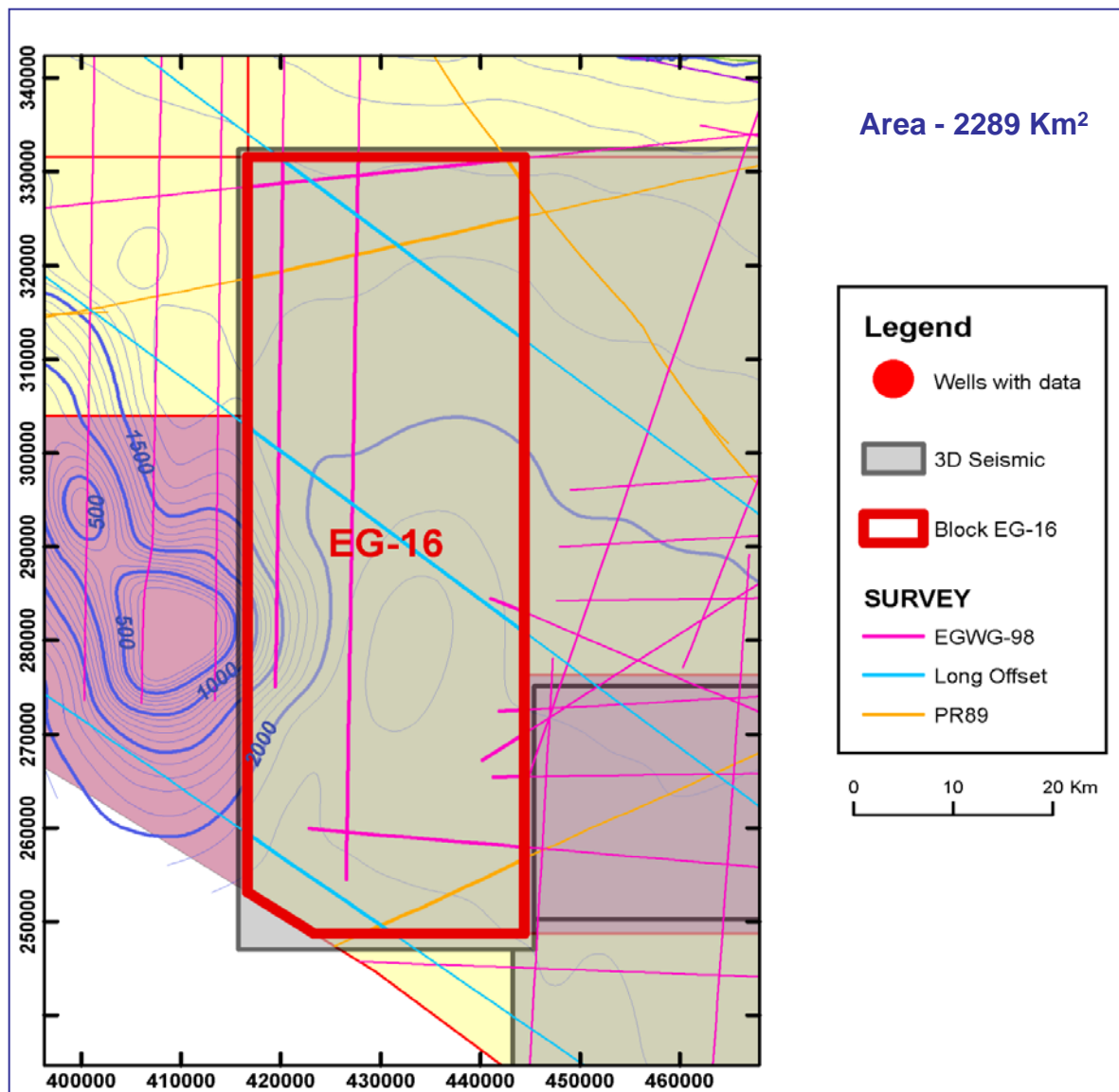
PR89 151 Km

Long Offset 145 Km

Well Data:

Hipocampo-1

Competitive Bidding - BLOCK EG-16



Current Data

3D Seismic Surveys:

MMIE/GEO-X Survey 2289 Km²

No Well Data

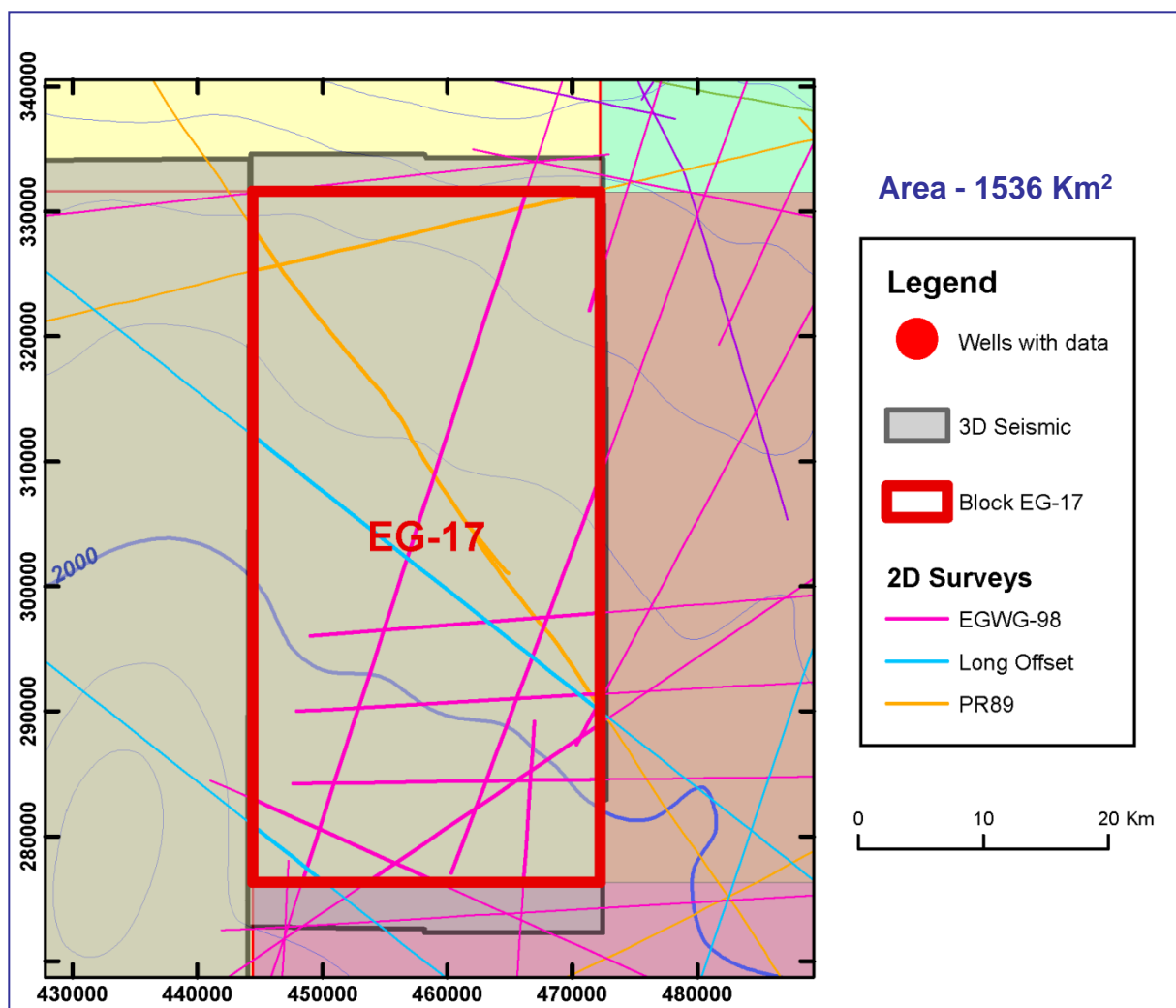
2D Seismic Surveys:

EGWG-98 198 Km

Long Offset 85 Km

PR89 50 Km

Competitive Bidding - BLOCK EG-17



Current Data

3D Seismic Surveys:

Block F-13, G-13 1536 Km²

2D Seismic Surveys:

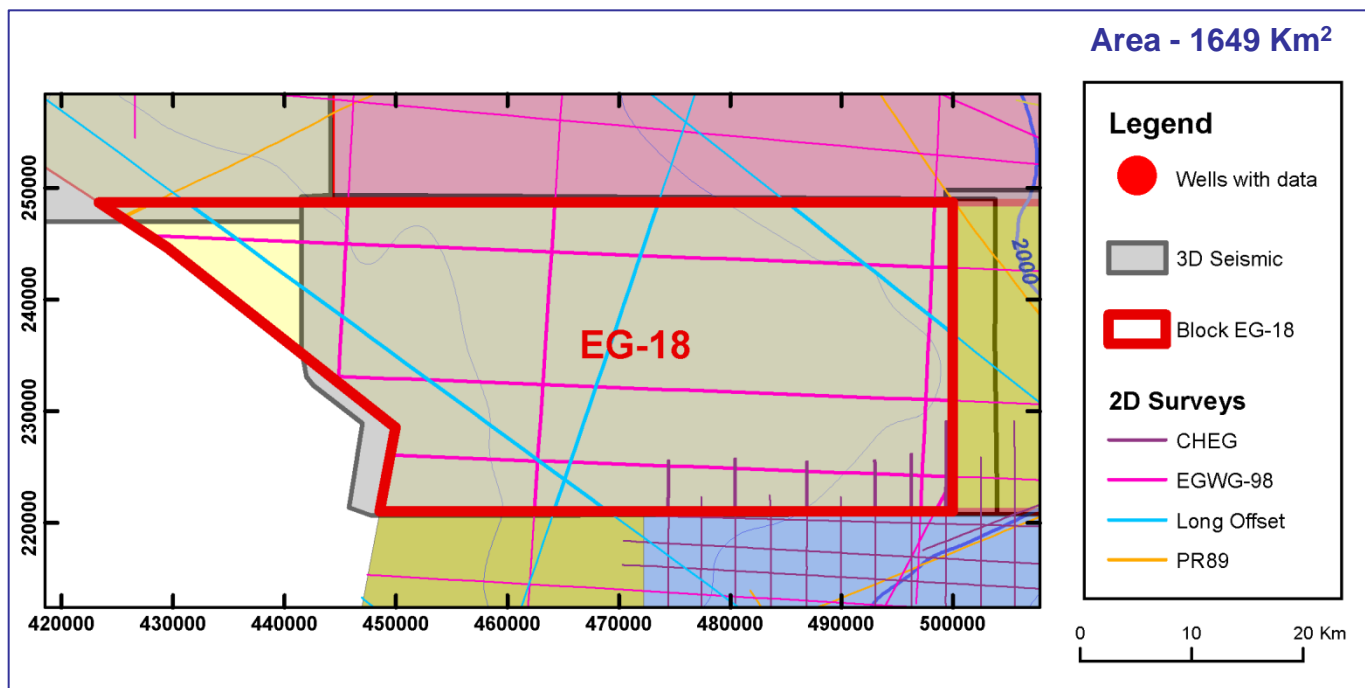
EGWG-98 223 Km

PR89 79 Km

Long Offset 43 Km

No Well Data

Competitive Bidding - BLOCK EG-18



Current Data

3D Seismic Surveys:

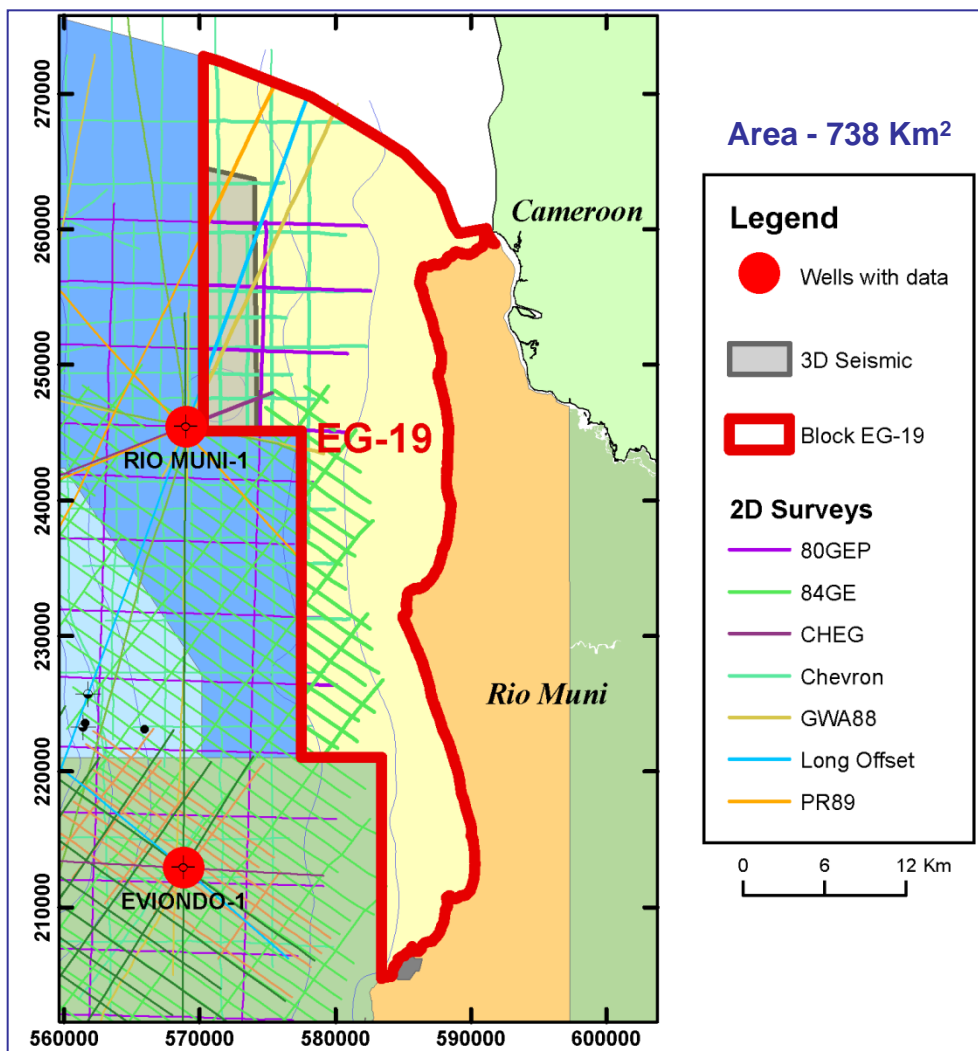
Block I-13, I-14 1531 Km²
F-12, G-12, H-12 33 Km²

No Well Data

2D Seismic Surveys:

EGWG-98 254 Km
Long Offset 95 Km
CHEG 31 Km
PR89 3 Km

Competitive Bidding - BLOCK EG-19



Current Data

3D Seismic Surveys:

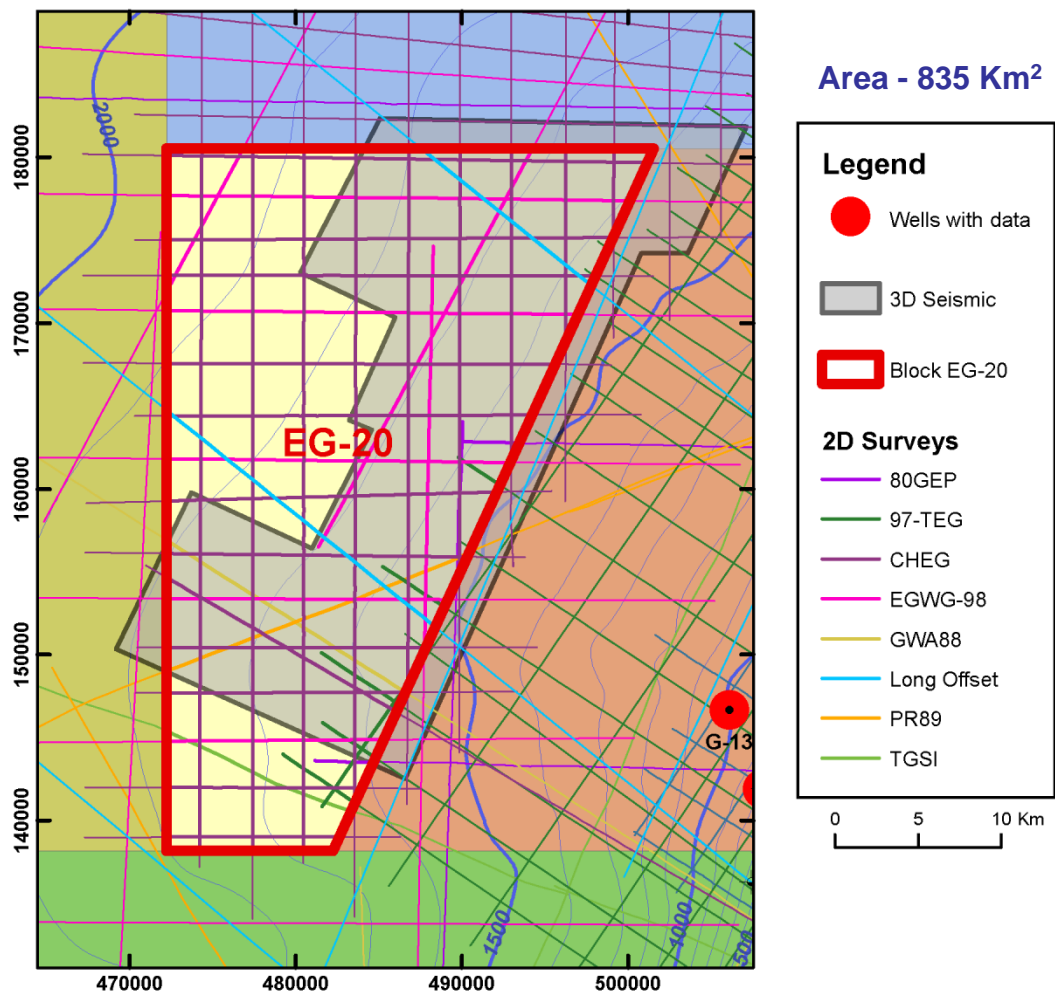
Block H 73 Km²

No Well Data

2D Seismic Surveys:

Chevron	188 km	Long Offset	22 km
84GE	123 km	PR89	12 km
80GEP	68 km	CHEG	5 km
GWA88	26 km		

Competitive Bidding - BLOCK EG-20



Current Data

3D Seismic Surveys:

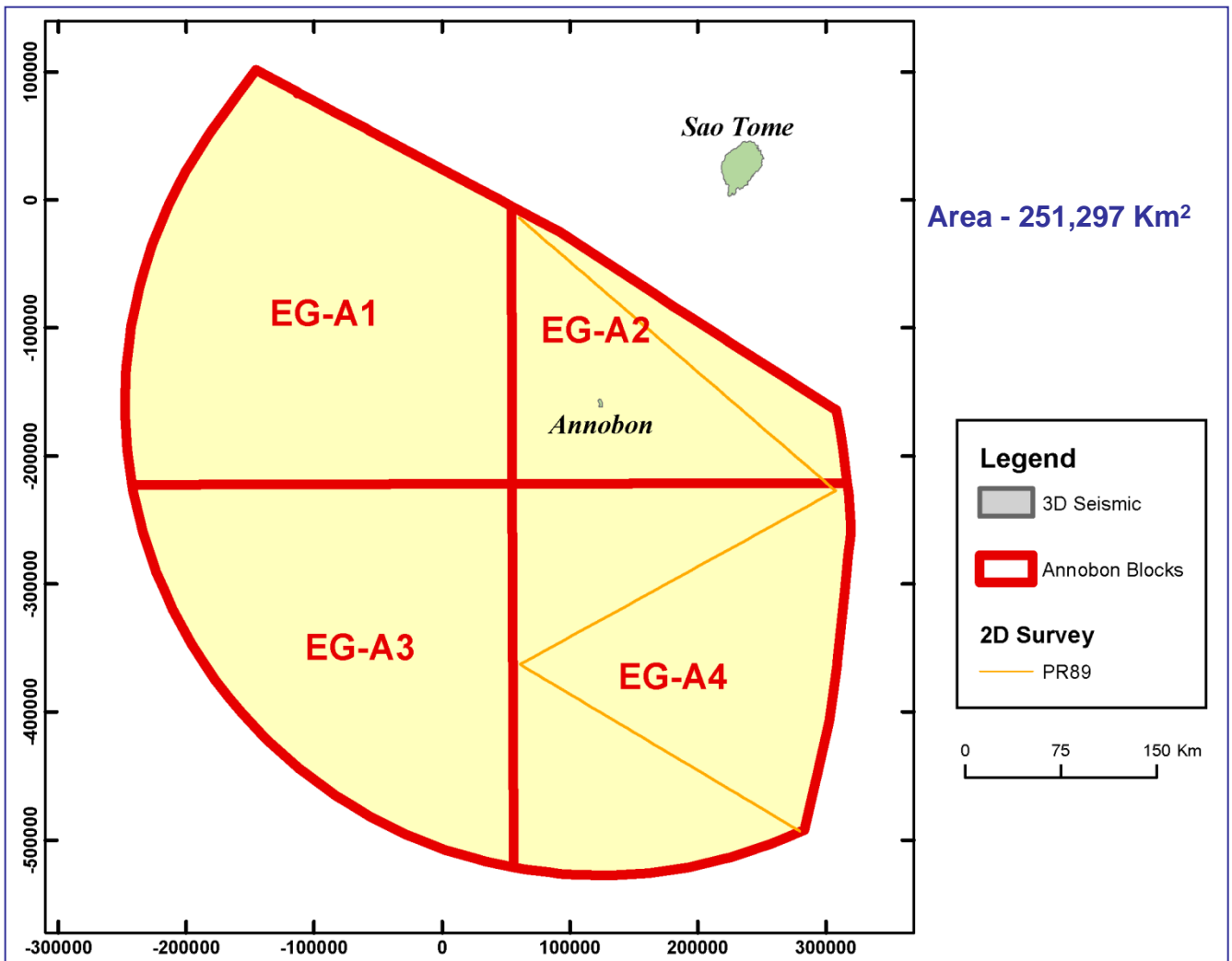
Block S 493 Km²

No Well Data

2D Seismic Surveys:

CHEG	494 Km	PR89	20 Km
EGWG-98	165 Km	80GEP	17 Km
Long Offset	34 Km	GWA88	17 Km
97-TEG	32 Km	TGSI	12 Km

Competitive Bidding – A1, A2, A3 & A4



Current Data

No 3D Seismic Surveys

No Well Data

2D Seismic Survey:

Annabon 1,2,3 863 Km

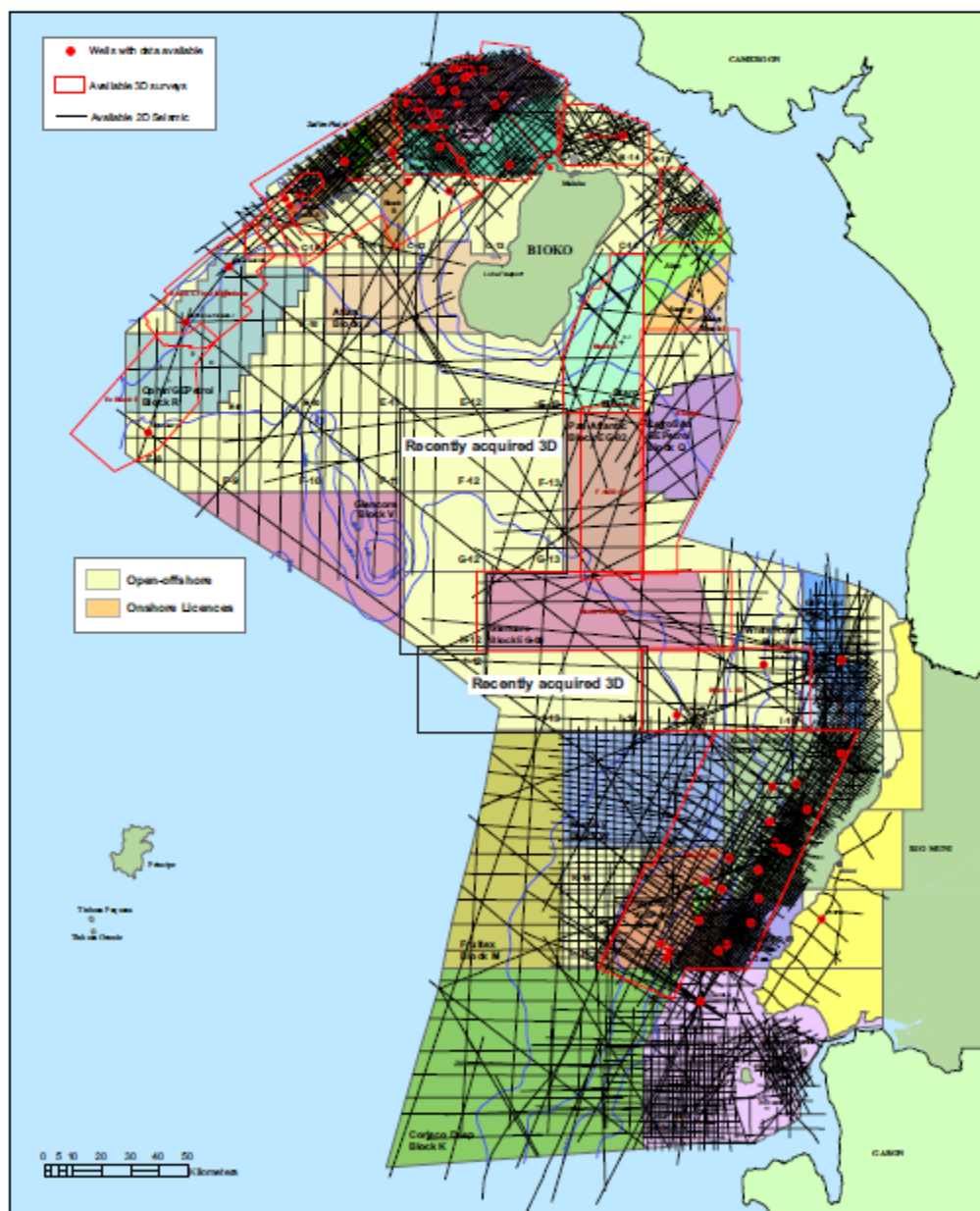


Technical Well and Seismic Database

RPS Energy

EQUATORIAL GUINEA

A comprehensive well and 2D and 3D seismic database arising from previous exploration activities on and offshore Rio Muni and offshore Bioko is held in the Ministry's archive. Data are available for licensing at competitive rates on a single party or group basis. The recent long offset 2D survey and a number of 3D are surveys available to license.



Summary of Available Data

3D Seismic Data

Recently acquired 3D seismic in relinquished acreage offshore Bioko and Rio Muni including 3D data acquired by ExxonMobil, Marathon, Chevron and Triton.

2002 Annobon 2D, 2005 Long Offset seismic survey and CSEM data

Well ties data package

Prepared for the 2006 Licensing Round, the seismic-to-well-tie package comprises well data from 14 wells located on or close to the 2005 Long Offset seismic lines, including: Ceiba-6, F-1, F-4, F-5, F-6, G-12, G-14, Hippocampo-1, Dorado-1, Eviondo-1, Rio Muni-1 and Rio Muni-A1

Technical Reports

A series of regional studies have been prepared by RPS Energy (formerly ECL) in association with the Ministry. Reports include:

- Source Rock, Maturity & Petroleum Systems Study of Equatorial Guinea, 2011.
- Regional Seismic Interpretation and Mapping and Integrated Geological Study, Offshore Equatorial Guinea, 2005.
- Rio Muni Basin - Structural and Stratigraphic Development and Source Rock Maturation History, 2002
- Biostratigraphic Interpretation of Offshore Rio Muni, 2002.

Historic Seismic and Well Data

Historic 2D seismic data includes 1980-90s vintage seismic data and more recent 2D seismic data acquired by Triton (97TEG) and Chevron (CHEG).

Data are available for viewing, subject to Ministry approval, at RPS Energy's offices in Henley, near London, UK. For details of current data holdings and licence fees, please contact **Simon Tubbs** at:

RPS Energy, 309 Reading Road, Henley-on-Thames,
Oxfordshire. RG9 1EL, United Kingdom

Tel: +44 (0)1491 415400 Fax: +44 (0)1491 415415
email: tubbs@rpsgroup.com

For further details please contact:

Ministerio de Minas, Industria y Energía

Carretera de Punta Europa, Malabo, Republica de Guinea Ecuatorial.

Tel: +(240) 333 093549 Fax: +(240) 333 093353





Petroleum Systems Study of Equatorial Guinea

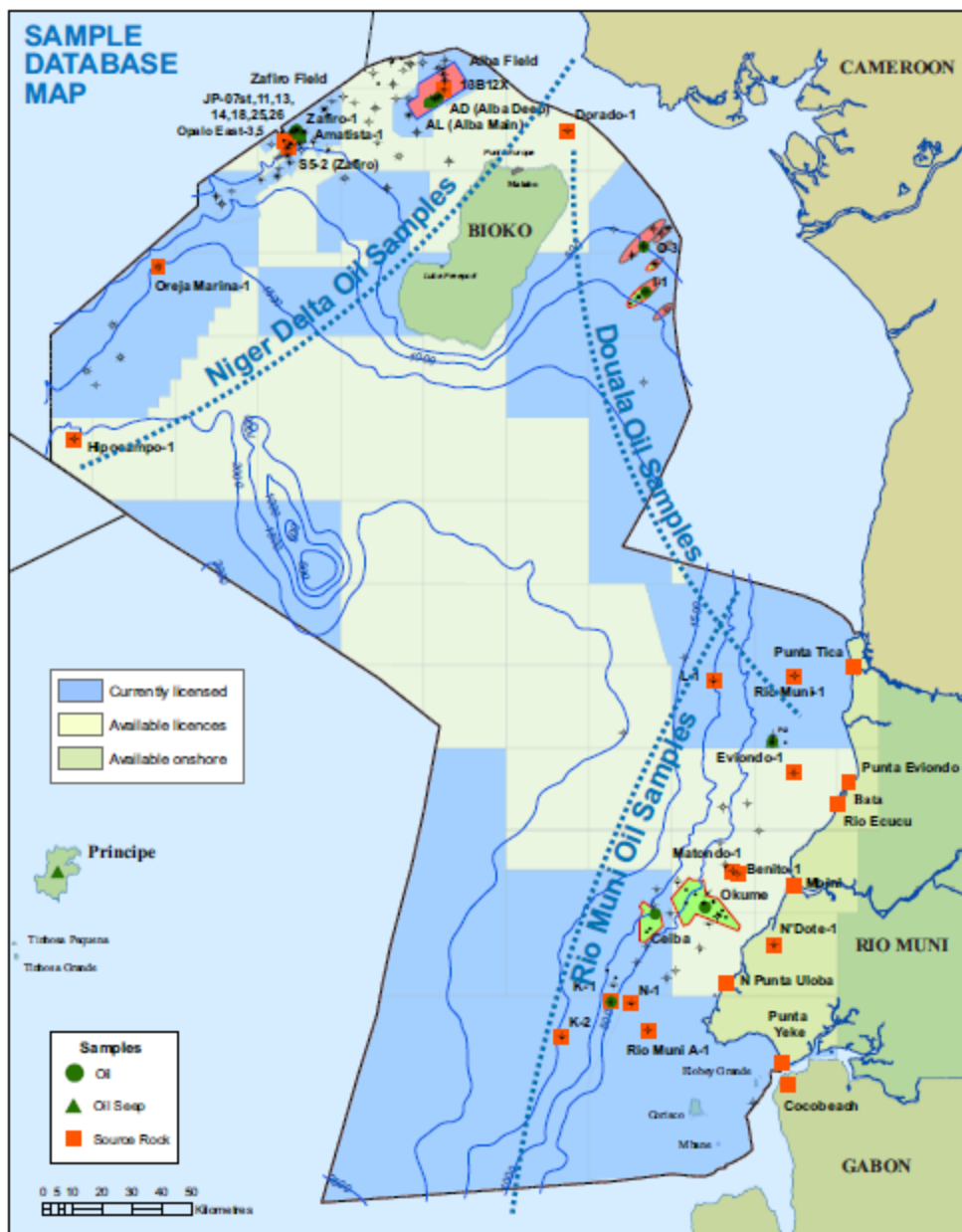
RPS Energy



EQUATORIAL GUINEEA

RPS Energy & IGI Ltd. are pleased to announce the completion of this new study on behalf of the Ministry of Mines, Industry and Energy of Equatorial Guinea.

This study develops an understanding of the petroleum systems in Equatorial Guinea including the distal Niger Delta, Rio Muni and Douala basins. Newly acquired high precision geochemical data serve to define oil families and provides the basis for oil to source rock fingerprinting. Geochemical interpretations have been contextualized within a geological framework by virtue of basin modelling. Integration of the above aspects with regional multi-disciplinary background knowledge provides new insights on the workings of Equatorial Guinea petroleum systems.

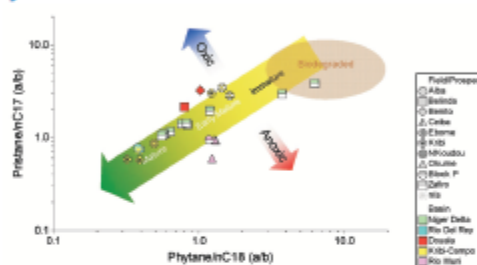
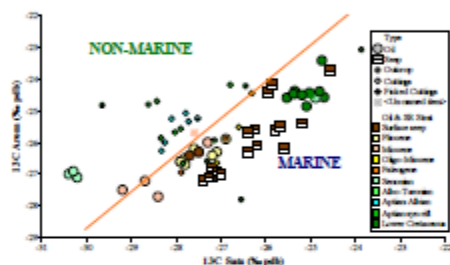


Petroleum Systems Study of Equatorial Guinea

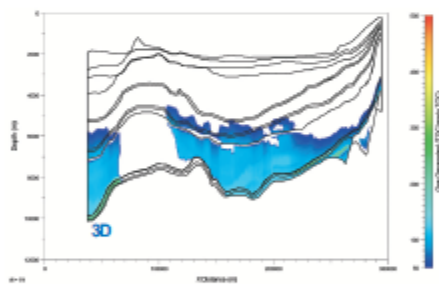
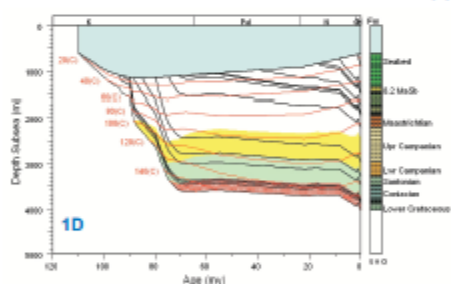
Sample selection, analyses and interpretation:

- 18 source rock extract samples were selected using screening data.
- 19 liquid hydrocarbon samples were collected from producing fields and discoveries.
- Samples were subjected to GC, GC-MS and stable isotope geochemical analyses at the Laboratory of the Government Chemist (LGC). A composite geochemical dataset comprising new and legacy data was interpreted by IGI Ltd using state-of-the-art pIGI software.
- Platte River's BasinMod® 1-D, 2-D and BasinView® software packages were used to derive a basin wide understanding of source rock maturation, timing of hydrocarbon generation, expulsion, migration and overall workings of the petroleum systems.

Geochemistry



Basin Modelling

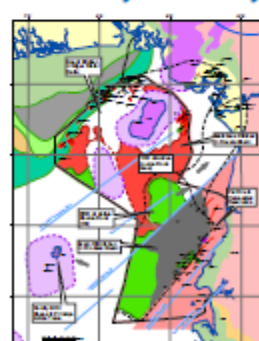


Deliverables:

The report consists of 4 volumes (Database, Geochemistry, Basin Modelling & Petroleum Systems). Examples of report content include pIGI geochemical interpretation plots, basin modelling 1-D burial history plots, 2-D fluid flow sections, maturity maps and graphical summaries of interpreted petroleum systems. A digital copy of geochemical data acquired for the current study is also included.

Price: £50,000

Petroleum Systems Analysis



For further details please contact **Abhen Pather** at:

RPS Energy, 309 Reading Road, Henley-on-Thames, Oxfordshire, RG9 1EL, U.K.

• Tel: +44 (0)1491 415400 • Fax: +44 (0)1491 415415

• email: pathera@rpsgroup.com





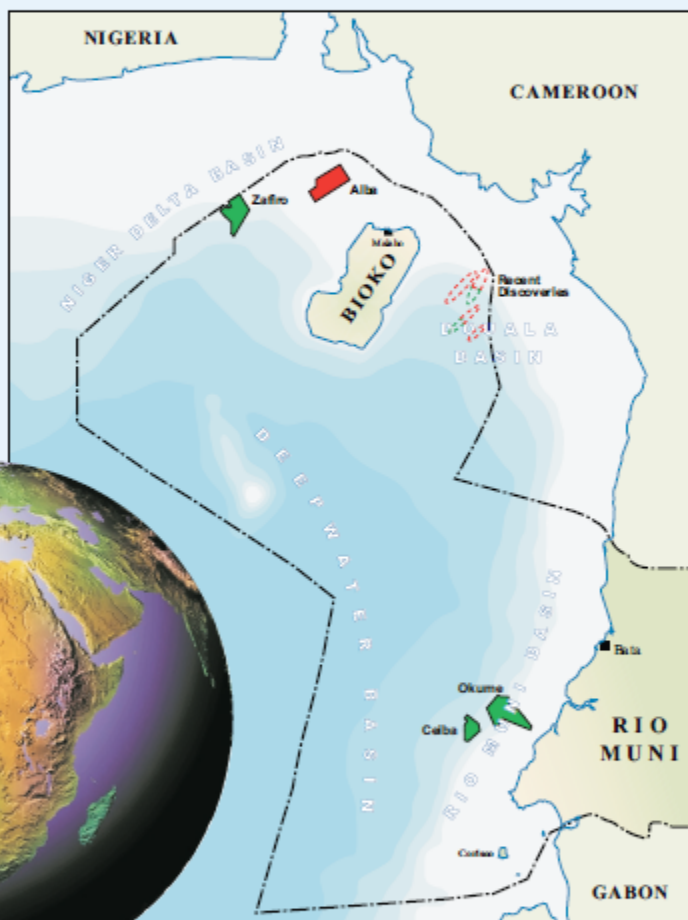
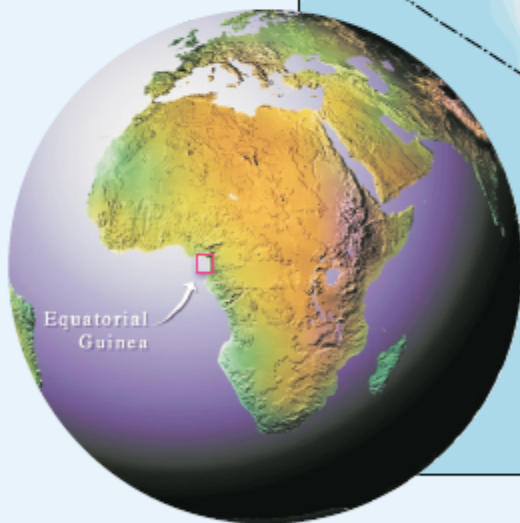
Regional Seismic Mapping & Play Fairway Study

RPS Energy

EQUATORIAL GUINEA

RPS Energy is pleased to present this major study of the entire offshore Equatorial Guinea area, including regional seismic interpretation, petroleum systems analysis and play fairway mapping.

Carried out in collaboration with the Ministry of Mines, Industry and Energy, this study represents the first regionally integrated seismic interpretation and the first fully regional appreciation of the structure, stratigraphy and petroleum systems of the Equatorial Guinea.



The project provides a focus for future exploration efforts by establishing a definitive understanding of the Tertiary and Cretaceous petroleum systems and play fairways across the area.

The database includes approximately 20,000 km of seismic and information from up to 30 wells from the Ministry's data archive, plus the results of previous RPS Energy (ECL) studies in the region.

RPS Energy (ECL) has acted as Technical Advisors to Ministry of Mines, Industry and Energy since 1994 and is in a unique position to carry out this study.



EQUATORIAL GUINEA

Regional Seismic Mapping and Play Fairway Study

The eastern Gulf of Guinea is widely recognized as being highly prospective for both oil and gas and has ranked as a top priority for international exploration for at least the past five years. Several exploration provinces are established within the region but extensive areas remain untested. New licensing activity in the area is set to continue for the foreseeable future.

The distribution of hydrocarbons in the region has been controlled by the complex evolution of structure, stratigraphy, overpressuring, and maturation. A proper understanding of this dynamic system is essential in order to focus successful future exploration efforts and requires a fully integrated regional approach. The study provides this perspective and addresses a number of important geological issues.

Key project objectives:

- Interpretation of the regional seismic database, depth conversion and mapping of key horizons.
- Definitive understanding of hydrocarbon occurrence and distribution across the region.
- Recognition and delineation of petroleum systems, including 1D and 2D basin modelling.
- Definitive mapping of Cretaceous and Tertiary play fairways.
- Creation of a GIS database in ArcView format

The project is divided into two parts, resulting in the following products:

Part A: Regional seismic interpretation and mapping resulting in a set of seismic time and depth maps

Part B: Integrated geological study resulting in a comprehensive interpretation report and enclosures volume, including Tertiary and Cretaceous play fairway maps.

Price

The study is now available on a non-exclusive basis for £62,500 (UK pounds)

For further details please contact Simon Tubb at:

RPS Energy, 309 Reading Road, Henley-on-Thames, Oxfordshire. RG9 1EL, UK

Tel: +44 (0)1491 415400 heathr@rpsgroup.com
Fax: +44 (0)1491 415415 website: www.rpsgroup.com/energy

Equatorial Guinea 2014 Licensing Round



Ministry of Mines, Industry and Energy
www.equatorialoil.com